

SUSSEX INLET DISTRICT

VISITORS GUIDE

WHAT'S INSIDE

- Events
- Visitor Information
- Things to do
- Accommodation
- Places to Eat
- Places to Shop

www.sussexinlet.nsw.au

Photo by Sam Sloan

SUSSEX INLET

The perfect South Coast location for your holiday break

Photo by Garry Sims



Photo by Linda Fairries



Photo by Linda Fairries



Photo by Scott Thompson



WHAT'S INSIDE



2

Welcome

Explore Sussex Inlet and learn about our history.

6

Events

Regular and annual events, festivals, markets and more.

10

Weddings

All you need to know for planning your special day.

14

Things to do

Fishing, bushwalks, swimming, surfing, cycling, kayaking, water skiing, sailing or just relaxing.

26

Places to stay

Camping to 4 star accommodation.

38

Places to eat

From a quick bite to fine dining.

48

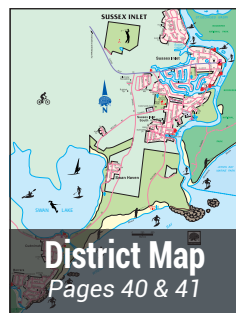
Places to shop

Everything from groceries to hardware, clothing and more.

54

Trades & Services

Trades and services directory.



WELCOME TO SUSSEX INLET AND DISTRICTS

Location

Sussex Inlet is located approximately half way between Nowra and Ulladulla. Situated on the coast Sussex Inlet village is actually an island which forms part of the Inlet to St Georges Basin from Wreck Bay in the Tasman Sea. The Island is connected by two bridges and there is only one road into the village which is a leisurely 15mins drive from the Princes Highway. The Sussex Inlet district comprises the villages of Sussex Inlet, South Sussex, Berrara, Cudmirrah, Swanhaven and Badgee.

As with most small towns Sussex Inlet has a long and interesting history.

Aboriginal History

Aboriginal people existed in the South Coast Region long before the sea rose to its current level and the Bherwerre Peninsula was created.

More than 100 pre historic Aboriginal sites have been recorded on the Bherwerre Peninsula, including shell middens, rock shelters, burial sites and ceremonial grounds.

Aboriginal people established camps where food and water was abundant and hunting and gathering was bountiful. The main sources of foods were yams, berries, and native animals such as kangaroos, possums and echidnas.

Prior to European occupation the area around Sussex Inlet was occupied by the Dhurga Aboriginal tribe who called the basin behind the Inlet Bherwerre and it was renowned for an abundant supply of fish.

Seafood has always been a major part of the diet of Dhurga people and oysters, abalone,



Sussex Inlet is Jerringa country with Cullunghutti as the spiritual base

pipis and mussels were easily found. Fish catches also proved plentiful with net fishing playing a major role in the lives of the people of Wreck Bay.

Today the Booderee National Park on the shores opposite Sussex Inlet are managed by the Wreck Bay Aboriginal community and there are many stories of a strong respect between the Aboriginal people and the Ellmoos family who shared their love of fishing and early boat building.

European Settlement

The first Europeans to walk through the area were survivors of the wreck the Sydney Cove in 1797. In 1827 the surveyor Thomas Florence travelled to St Georges Basin and mapped Sussex Inlet and noted the Dhurga Aboriginal name for the area was Bherwerre.

In the 1840's two brothers Richard and John Glanville with their families took a land grant at Berrara just south of Sussex Inlet and began clearing the land to encourage other settlers into the area. Located on a staging route which ran between Ulladulla and Nowra the fertile land and excellent fishing would soon bring dairy farmers and timber cutters to the area in the 1860's.

Although it was not named until the 1850s, Wreck Bay on the coastal side of Sussex Inlet was a notorious part of the coastline south of Sydney. At the time, Welbank's Nautical Almanac warned sea vessels to stay well clear of the coastline as ships were often swept into the bight and consequently grounded on large rock formations.

Grounded were the convict transport ship The Hive in 1835, and the Walter Hood in 1870, the deceptive and treacherous conditions would wreck over a dozen ships.

The Walter Hood was travelling from Melbourne with tiles for St Mary's Cathedral in Sydney when gale force winds at Red Head buffeted the ship into rocks at Wreck Bay. It would take a week for help to arrive, and the 13 passengers that died in the shipwreck are commemorated in a monument erected on Red Head later the same year.

Our Danish Connection

Sussex Inlet also has a Danish connection all thanks to an intrepid and adventurous Danish seaman, Jacob Ellmoos.

In 1878, Jacob was 15 years old when he arrived in Port Adelaide, South Australia and decided to travel north. He walked over 1,000 miles and eventually established himself at the South Head Signal Station, near Watsons Bay, in Sydney, which was then a fishing village.

Acquiring a seaworthy boat he sailed south, fishing the coastal waters and finally made his base at Cape St George lighthouse on the southern headland of Jervis Bay.

On a fishing trip in November 1880, he crossed the bar at the entrance of Sussex Inlet and thus began the Ellmoos family association with Sussex Inlet. He found rich fishing grounds and unspoilt beauty and soon sought and was granted a selection of 1200 acres of land on the northern bank of the inlet. So began the story of Sussex Inlet, originally named 'Sussex Haven' by Captain Cook on his epic journey of discovery.

Each year on the June long weekend we celebrate our Danish heritage with the Viking Festival. For more information on our history please go to our website: www.sussexinlet.nsw.au



SUSSEX INLET

Originally settled in 1880, Sussex Inlet has grown from a small holiday village into a well-equipped community. Much of the town is built around a system of tidal canals, offering water panoramas and easy access for boating enthusiasts. There are ocean beaches just to the south and the broad expanse of St Georges Basin to the north.



BERRARA

Berrara is a secluded coastal village that is lucky enough to be host to some of the best swimming water and beach fishing on the south coast.

There is a surf beach as well as a tidal lagoon for swimming and water sports.



BADGEE

If you travel along River Road over the bridge to Badgee you will find homes overlooking the river and inlet foreshore reserves.

Abundant wildlife, including kangaroos can be seen in their own natural environment.



CUDMIRRAH

The small village of Cudmirrah is located a short drive away from Sussex Inlet, and is ideally positioned to take advantage of the stunning coastline with surfing, sailing, water skiing & mountain biking activities.



SOUTH SUSSEX

Down on the Inlet is South Sussex which leads to the entrance to the ocean. You will find Marine Rescue, caravan parks, cafes, marina and a boat ramp. A little further along is the Lions Park with a jetty and dump station for RV's.

Just around the corner is Pacificana Drive which will take you to Cudmirrah Beach, also known as Sussex Beach, the beach is patrolled during holiday season.



SWANHAVEN

Swan Lake has some stunning flora and fauna and home to a wide variety of bird life. The lake is brackish salt water and also plays host to a number of water activities including sailing, swimming, water skiing and fishing.

On the edge of the lake is an area set-aside for family recreation. It caters for young children to adults.



GOLF COURSE ESTATE

Sussex Inlet Golf Village is a new masterplanned community surrounding the Sussex Inlet Golf Course.

Golf Course Estate includes 'Sussex Inlet Golf Village', 'Golfcourse Way Village' and an over 55's affordable village.

The Sussex Inlet Golf Course is a celebration of classic Australian, a classic country-coastal style course abundant with local wildlife. Don't be surprised to see the local kangaroos checking out your skills on course!



EVENTS

JANUARY



Events through December to January each year. Come along and enjoy 'Summer at Sussex' with a great range of food, fun and music events.



FEBRUARY

SIBYC Annual Sailing Regatta

See the boats race with their spinnakers flying, new entrants and supporters always welcome. Held in February on St Georges Basin.

MARCH

Classic Show & Shine

Held on the last weekend in March. Come along and display your pride and joy, held on the pristine Sussex Inlet waterfront. To enter email: sussexinletclassiccarkulture@gmail.com



SIBYC Sailing Classic

Held in March on St Georges Basin.

MAY

B.R.O.E. - Fishing Classic

Held at the end of May. Stands for Beach, Rock, Ocean and Estuary. If you love fishing then try to win some of the \$5,000 cash and prizes. To enter email: info@sussexinletfishingclub.com.au



Winter@Sussex includes a range of events and promotion of Sussex Inlet as a winter short break location. Includes food events, art exhibitions, celebration of dance event and 5 Music@ Cinema events in partnership with Swordfish Brewing and Sussex Cinema.



From 8am to 12:30pm every second Saturday of the month on the Elmoos Centre grounds and the Lions Club Peace Park on Jacobs Drive next to Cinema.



Autumn Celebration of Food



From 1st May to the June long weekend. Join us in a celebration of everything that is Hospitality across all regions of the Shoalhaven. From long lunches, conversations, tastings, masterclasses to craft beer events, degustations, dinners, high teas, finishing with the celebrated Viking Festival Long Lunch at Sussex Inlet on the Sunday. Become a Foodie, visit: www.shoalhavenfoodnetwork.com.au

JUNE

Sussex Inlet Golf Club Open

Held in June at Sussex Inlet Golf Club, Golfcourse Way, Sussex Inlet.

Viking Festival - June Long Weekend

Celebrating the settlement of the area by Jacob Ellmoos and his family who came from Denmark. Viking Village, live music, rides and entertainment and fun for the whole family. For more information and to buy tickets visit: www.vikingfestival.com.au



JULY

Christmas in July

Friday 11 July to Sunday 13 July. Enjoy Christmas inspired food in our cafes, Santa in the snowfields at the Ellmoos Centre and Christmas markets with lots of free kids activities.

SEPTEMBER

Blues and Brews



A great new music festival for Sussex Inlet from Thursday 18 September to Sunday 21 September. Includes - 'Music on Jacobs Drive', 'Music @ Cinema', 'Blues and Brews' performances at Swordfish Brewing and Sussex RSL.

Boats and Spokes



Friday 19 September to 21 September. A niche event showcasing pre-war motorcycles and steam boats, based down at Pelican Shores, includes a rally on the Anchor Reserves.

OCTOBER

The Annual Pink Night

Held in October, a fun filled Pink themed night to raise funds for the Sussex Inlet Cancer Support Group who provide all kinds of support to the local community.

OCTOBER

Oktoberfest

Last Weekend in October

Get ready to don your lederhosen and dirndls as we bring the spirit of Oktoberfest to **Swordfish Brewing** for an unforgettable weekend of fun, food, and festivities for the whole family!



NOVEMBER

Flatty Classic

An honesty based catch and release competition. Target species Dusky Flathead.

DECEMBER

Santa Paddle

Enjoy the Sussex Inlet Santa Paddle on the Inlet. A great family day out, coffee and food available. In 2025 we are aiming to break the Guinness Book of Records for number of Santa's on paddling down the Inlet on boards or kayaks.



**FREE EVENT
PARKING!**

**Long Lunch
Event Sunday**



**FREE
Entertainment
and rides
included with
ticket!**

JUNE LONG WEEKEND



For more information and to purchase tickets visit:
vikingfestival.com.au

Sussex Inlet

COMMUNITY MARKET

Where the Bush meets the Sea

2nd
Saturday
each month

**Great selection of stalls • Plants • Arts and Crafts
Gifts, Jewellery, Preserves, Photography, Clothing**



sussexinlet.nsw.au/whats-on

Cheers to a wine tasting!



Make your holiday feel special with a private wine tasting!
It's the perfect way to celebrate with friends or family, and
a fun & educational experience.

Pick a tasting package, tell us where to host,
and we'll bring our wine magic to you.

Your tasting includes:

A WINE EXPERT

FINGER FOOD

COMPLIMENTARY PREMIUM WINES

To book, call or text Gui
on 0405 074 109
Liquor Licence Number: LIQO660038354



WEDDING SERVICES AT SUSSEX INLET



If you are planning a wedding on the NSW South Coast Sussex Inlet can meet all your needs as we have an amazing range of options for you to consider for your special day.

For the Wedding Ceremony

- The beautiful Sussex Inlet can be your ceremony backdrop with many beautiful places where weddings can be conducted along the reserve.
- Overlooking our beaches at Cudmirrah and Berrara there are magical views perfect for a backdrop for your ceremony.
- Our historical Community and Catholic churches in the centre of Sussex are perfect for a more traditional wedding ceremony.

Wedding Receptions

Depending on the size of your wedding Sussex Inlet can provide what you need.

Weddings @ Swordfish Brewing offers a large venue overlooking the pristine Sussex Inlet catering for up to 200 guests. For more information visit: www.swordfishbrewing.com.au



Weddings @ Pelican Shores offers a boutique wedding option overlooking the Sussex Inlet. Catering for up to 75 guests.

For more information visit: www.pelicanshorescafe.com.au

Weddings @ Laguna Lodge offers a marque experience on the reserve overlooking Sussex Inlet catering for 120 guests with a range of options for caterers or food vans. On site accommodation for 45 guests is also available with the Boat House partnering with Laguna Lodge for the Bridal party accommodation and preparations. For more information visit: www.lagunalodge.com.au



Centre Church, Catholic Church and the Anglican Church provide options for traditional weddings.

The Elmoos Community Events Centre, Thomson Street Hall, Cudmirrah Community Hall and Sussex Surf Club offer a cost effective wedding reception venue with options for food vans and caterers. **Sussex RSL and Sussex Bowling Club** also offer venues for receptions with large auditoriums and catering for receptions available.

Our historical **Elmoos**



Accommodation and Other Wedding Services

Sussex Inlet has extensive high quality accommodation available to suit large groups or large houses suitable for the Bridal party preparations.

See 'Places you can stay' section of the Visitors Guide or visit: www.sussexinlet.nsw.au/stay to find out more.

All the services you need for a perfect wedding are also available in Sussex Inlet making your arrangements much easier.

Sussex Inlet Wedding Services include: Hair and beauty, photography, videography, celebrant, catering and Sussex Pontoons for photos on the Inlet.

See the 'Trades and Services' section of the Visitors Guide or visit www.sussexinlet.nsw.au for details of all wedding support services.





Wellness Experiences

AT SUSSEX

Sussex Inlet is the perfect place for a Wellness Experiences short break with your friends, workmates or family. Invigorate yourself and awaken the senses on your Wellness Experiences getaway at Sussex inlet.

- Boutique accommodation to suit large groups close to beaches or the Inlet
- Amazing beaches and pristine waterways
- Beautiful walks or bike rides through **Conjola National Park**
- Wellness activities to soothe such as yoga, pilates, massage, ice baths, sauna
- Wellness activities for fitness and exercise including Stand Up Paddle Boarding and Kayaking
- Food experiences to tempt the taste buds with a great range of cafes for breakfast, lunch and dinner
- Enjoy a Pontoon sunset cruise to experience the Inlet before dinner at one of our waterfront dining cafés



Accommodation

Our Wellness Experiences accommodation partners offer great options for groups to stay together in comfort and style with amazing accommodation options available for your Wellness Experiences short break on a weekend or mid week.

Berrara/Cudmirrah/Swan Lake

- **Berrara Beach Holiday Chalets** - www.berrarachalets.com.au
- **Surfside Cudmirrah Beach** - www.surfsidecudmirrahbeach.com.au
- **Lakeside Cabins** - www.lakesidecabins.com.au
- **The Springs Cottages** - www.thespringscottages.com.au

Sussex Inlet

- **Calm Waters** - Phone: 02 4441 3596
- **Laguna Lodge** - www.lagunalodge.com.au - Phone: 4441 2315
- **Serendipity** - Phone: 0407 250 674
- **The Boat House** - Phone: 0439 207 263
- For a range of accomodation options contact **LJ Hooker** on 02 4441 2135 and **Real Property Agents** on 02 4441 3444

Wellness Activities

Our Sussex Inlet Wellness Experiences team can tailor a wellness experience to suit your needs or you can book activities to suit your group needs.

Email: wellnessexperiencesussexinlet@gmail.com

Massage

Chinese Massage - 0404 860 610

Thai Massage - 0466 969 955

Yoga @ Cudmirrah Hall - 0414 509 154

Beautician - 0491 648 414

Holistic Health and Wellness

The Life Centre: www.lifecentreholistichealthandwellness.com.au - 0415 940 396

Drumming Circle - monthly gathering at community garden phone 0416 720 963

On the Water

Stand Up Paddle Board/ Beach and Lake Pilates

www.sussexinletsup.com - 0421 120 376

Sussex Pontoons: www.sussexinletpontoons.com.au - 0414 803 644



Great Food Options

See the great food experiences available in Sussex Inlet @ www.sussexinlet.nsw.au/eat



LOCAL WALKS

Chris Creek to Badgee Bridge 30mins

Start at the boat ramp at the end of River Road near Chris Creek bridge. Follow this path along the water past the RSL until you reach the Badgee bridge. You can continue over the bridge and walk around Badgee or return back to Chris Creek.



Some of the local wildlife in Badgee

Badgee Bridge to the Surf Club 2-3 hours

This walk can be shortened by starting at different points along the way. To do the entire walk is approximately 2-3 hours.

Start just before Badgee Bridge on River Road. Follow the path along the river towards the township. Pass the end of Jacobs Drive and continue past the RSL Club.

Continue your walk along the river to Chris Creek boat ramp, cross the Chris Creek bridge, continue up the hill past a rest seat at the corner of Ray Street. Straight ahead you are now on Lyons Road continue to Sussex Road and turn left towards the river.



Once you reach the river there is a small carpark at the Marine Rescue Centre with two cafes, Pelican Shores Café and Marina and The Anchor Café, a good point for a stop.



Continue your walk along the public river front reserve, through a small patch of mangroves and over a small boardwalk. Emerge onto the Bowling Club public reserve, follow the river and cross into the Lions Park.

From the Lions Park turn right into Edgewater Avenue, follow the road to Pacificana Drive and turn left into Alamein Road. At the end of Alamein Road is a caravan park with a public reserve on the rivers edge.

Follow the track along the edge of the river which will lead you to the Alamein steps on your right. Climb the steps, stopping at various viewing spots

along the way to admire our wonderful waterways. Emerge at Holiday Haven Cabins and reserve and follow the road to Pacificana Drive. Turn left into Pacificana Drive and this road will take you to the surf club.



The Entrance

Alamein to the Haven

1 hour

Enter the Alamein Caravan park and walk along the public river reserve to the end of the park, on your right leading into the bushes you will find stairs that will lead you to the Haven.



There are quite a few steps on this walk so it might be a good idea to wear comfortable walking shoes.

Cudmirrah to Swanhaven

1 hour *(dog friendly)*

Start at Cudmirrah Cafe opposite Errol Bond Reserve on Goonawarra Drive. Head across the reserve to the bridge.

Cross the bridge and follow the community path to Swanhaven.



Swan Lake Bridge

At the reserve at Swanhaven continue up the hill past the children's playground and follow Lake Drive on the left. Round the bend onto Hoffman Drive then take a right onto Yarroma Ave which will take you back to the small boat ramp and reserve.

At the Swan Lake Ski Beach dogs are allowed off leash 4pm-8am October to April and 3pm-10am May to September.

Retrace the path back to Cudmirrah Cafe and enjoy a well deserved coffee.

Time needed for this walk is 1 hour return.

Fishermans Rock

30mins

Walk west along the bush path from the playground at Berrara Creek to Fisherman's Rock. During wet weather this track is impassable. This is a good steady walk with many varieties of flora and fauna to view.



Fishermans Rock

LOCAL WALKS

Berrara Lagoon to the Mermaid Pool - 30mins

Starting from Berrara Road car park head down onto Berrara Beach crossing the lagoon (low tide is best).



From here it is a 1.5km walk along the beach to the rock shelf at the far end where you will find Mermaids Pool. A rock pool big enough for the whole family to take a dip in!



Mermaid Pool

Berrara Headland 1.5 hours

Start at Cudmirrah Cafe opposite Errol Bond Reserve near the Cudmirrah Bridge. Head along Collier Drive to First Ave and the Community Hall. Turn left, pass the Fire Station and follow Koolyn Drive to the end of the park. Head across the park and pick up the track alongside the lake entrance.



Berrara Headland

Continue onto the beach and turn right. Walk along Kirby's beach to the rock platform at the end. Only at a very low tide it is possible to walk all the way around the Cove and rocks to Berrara Creek (it is well worth checking the tides before starting out). There are many rock pools to explore and also fossils to see.

This area is part of the National Park and fossils must not be removed.

At Berrara Creek turn right and walk up to the road. Follow Berrara Road to Sixth Ave. Ahead is Fisherman's Rock Rd, a dirt road, going left. Cross this road at a large Cudmirrah National Park sign and walk 100 metres to a track leading off to the right. Follow this track back to Goonawarra Drive, turn right and finish at Cudmirrah Cafe for a well earned coffee.

Time needed for this walk 1-1.5 hours.



Berrara Cove

SUSSEX INLET PONTOONS



**Call us on
0414 803 644
or book
online**



sussexinletpontoons.com.au

National Park Walks

Walk the beaches and the National Park to the Walter Hood Monument or all the way to Bendalong.

Walk or bicycle ride west into the National Park on the many dirt roads, paths, and fire trails.



*Berrara Creek Loop Walk
Conjola National Park*

Medlyn Ave to Cudmirrah

This track starts from Medlyn's Ave and takes you all the way to Cudmirrah Cafe through Swanhaven along the walking track near Swan Lake.

There are many bike and walking tracks in the national parks of the Sussex Inlet district.



*Medlyn Ave to Cudmirrah
Swan Lake Bridge*

BIKE TRACKS

Badgee Bridge to Chris Creek Bridge

This is a shared concrete pathway, with pedestrians, along the riverfront and is a great ride for the little ones on their bikes whilst you walk or ride with them.



Shared Riverfront Pathway

SKATE PARK & LEARN TO RIDE

These are both located at the Thomson Street Sporting Complex, Thomson Street Sussex Inlet.



CLUBS

Sussex Inlet Bowling Club



St Georges Avenue, South Sussex
4441 2087

Sussex Inlet RSL Club



200 Jacobs Drive, Sussex Inlet
4441 2076

Sussex Inlet Golf Club



7 Golfcourse Way, Sussex Inlet
4441 2259

FISHING

Off the bank on the Inlet at the following Waterfront Reserves:

- Badgee Bridge Park
- Nielson Lane
- Jacobs Drive
- Chris Creek Bridge Park
- Marine Rescue Park
- Lions Park
- Berrara Creek Reserve
- Sandy beach entrance of the Inlet

OFF THE BEACH

- Bherwerre Beach
- Cudmirrah Beach, down from surf club
- Cudmirrah Beach, Swan Lake opening
- Kirby's Beach
- Berrara Beach

OFF THE ROCKS

- Cudmirrah Beach, rock shelf north of surf club
- Cudmirrah Beach, at Swan Lake opening
- Kirby's Beach headland
- Berrara Beach, Mermaid Pools

IN A BOAT

- **Fish all of the Inlet** – Swan Lake – Berrara Creek
- **St Georges Basin:** The Poles, Jewfish Bay, One Tree Bay, Artificial Reef

OUTSIDE FISHING

Cudmirrah Reef (*obtain local advice before crossing the bar to go ocean fishing*).

Please remember the size and bag limits for fishing (*catch and release anything you won't eat is always the best policy, it means we will have plenty of fish the next time we go*)

There is a wide and plentiful variety of fish in the Sussex Inlet District including:

Dusky Flathead

Legal lengths: 36cm - 70cm

Bag limit: 5 or 10 in possession

Where: Main River, Keys, St Georges Basin. Look for drop-offs

Good baits: Baitfish (live poddy mullet) but will take just about anything while drifting



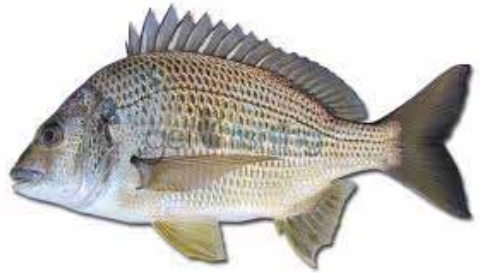
Bream

Legal lengths: 25cm

Bag limit: 10 in total

Where: Main River, Keys, Beaches & St Georges Basin. Look for structure and jetties.

Good baits: Prawns (live is best), marine worms, small baitfish.



Whiting

Legal length: 27cm for Sand Whiting only

Bag limit: 20 in total

Where: Main Inlet, St Georges Basin.

Look for sand flats.

Good baits: Saltwater nippers, marine worms, peeled prawns



Snapper

Legal length: 30cm

Bag limit: 10

Where: St Georges Basin, the beach rocks and offshore

Good baits: Squid, prawns, fresh fish strips



Australian Salmon

Legal length: None

Bag limit: 5

Where: Beaches, dusk & dawn are best

Good baits: Pilchards (gang hook) and lures



For more fishing information visit Dale and his friendly staff at
Sussex Inlet Tackle & Toy Shop, 168 Jacobs Drive, Sussex Inlet 4441 1660

KAYAK



Best locations are Swan Lake and Berrara Creek and the Inlet. It is also great to paddle around the pristine canals and waterways of Sussex Inlet or surf the beaches.

SAILING



Swan Lake and St Georges Basin

The Sussex Inlet Basin Yacht Club sail St Georges Basin in season and recreational sailing can be done on Swan Lake.

SNORKELLING

The Cove Located at the end of Silversands Drive, Berrara. This is also a great place to view interesting examples of fossils along the rock shelves and rock pools.



STAND UP PADDLE



Best locations are Swan Lake and Berrara Creek and the Inlet. It is also great to paddle around the pristine canals and waterways of Sussex Inlet or surf the beaches.

For SUP lessons contact Madeline Rayner - 0421 120 376

SURFING SPOTS

Taboo/Sussex Point

Located just before Sussex Surf Club & Beach is a dirt track on the left that will take you out to the far end of the beach. This spot is for advanced surfers.

Conneally's Reef/Cudmirrah

Located at the end of Third Ave, Cudmirrah.

This spot is for intermediate surfers.

Berrara Beach

Located at the end of Berrara Road.

Great spot for intermediate & beginner surfers.



SWIMMING STILL WATER

Medlyn

Located at the end of Medlyn Avenue in the National Park is a small private beach which is great for children, it is sandy, shallow, slowly gets deeper and there are no waves.

Fishermans Rock

At the end of Berrara Road, you will find a dirt track to the left going behind the houses on Sundowner Ave. At the end of the track there is a great swimming spot and jump rock which the big kids under supervision will love.

Berrara Lagoon

Situated on Lakeland Ave and also by Berrara Beach, the lagoon occasionally opens up to the ocean. It is great place for the little ones to paddle, swim and have some fun.

Mermaid Pool

This beautiful rock pool is located at the end of Berrara Beach.



It is a stunning walk and swimming spot for all to enjoy, especially for the little ones. The Mermaid Pool is at it's best during the high tide.

Sussex Inlet Aquatic Centre

Sussex Inlet Aquatic Centre is the perfect place to enjoy a swim or aqua aerobics classes.

The centre offers a range of facilities including a 25 metre heated indoor pool, sports shop, kiosk, inflatable obstacle ride, outdoor lawn and play area, inflatable party bookings are available. 21 Thomson Street, Sussex Inlet:

4406 2055



SWIMMING BEACHES

Cudmirrah Beach - Sussex Inlet

Located at the end of Pacificana Drive Sussex Inlet. Here you will find the surf beach, beach lookout and the Sussex Inlet Surf Club, this beach is patrolled during holiday season.



Cudmirrah Beach

Cudmirrah Beach - Cudmirrah

Entry via Third Avenue off Collier Drive.
Cudmirrah (*not patrolled*)

Berrara Beach

Entry via Berrara Road, Berrara
(*not patrolled*)



Berrara Beach

Kirby's Beach

Entry via eastern end of Pope Ave,
Berrara (*not patrolled*)

The Cove

Entry via Silversands Drive, Berrara
(*not patrolled*)

WATER SKI/JET SKI

The best place for these sports is Swan Lake which is the location for many water activities, however St Georges Basin is also great for water sports as it is a large area with no speed limits. Please remember to observe the speed limits in the Inlet to preserve our environment and to protect your wallet from RMS fines.



BOAT RAMPS

Nielson Lane

Located at the end of Nielson near the main street and shops, this ramp has a single slipway suitable for medium sized boats. With a single jetty plus fish cleaning facilities, this is the closest ramp to St Georges Basin.

Chris Creek/Jacob Ellmoos Reserve

Situated off River Road, opposite Harbord Street, this single slipway is suitable for smaller boats. No jetty here so you will have to get your feet wet. Basic fishing cleaning facilities, no running water. A Good start to explore the Keys, canals and Ralph Lucas Waterways.

Lions Club Park



The largest boat ramp in the area, located at the end of Lakehaven Drive in South Sussex. There is a double slipway suitable for larger boats as well as two jetties and undercover fish cleaning facilities with running water. Launches straight into the main river and is the closest ramp to the ocean. A dump station for RV's is located at Lions Club Park.

Riverside

Situated at the end of Sussex Road in South Sussex this ramp is suitable for medium sized boats. No jetty or fish cleaning facilities.

Swan Lake

Two ramps launch into Swan Lake, a hotspot for water skiers. No jetties. The larger slipway is located off the Springs Road at Cudmirrah, and there is a smaller slipway in Swanhaven at the end of Yarroma Ave, this is only suitable for light craft/canoes.

BBQ'S (OR FIREPLACES)

BERRARA - Berrara Lagoon Reserve
Lakeland Ave

CUDMIRRAH – Errol Bond Reserve
Goonawarra Dr.

SUSSEX INLET

Sussex Inlet Waterfront Reserve
opposite RSL Club - Jacobs Dr.

SUSSEX INLET SOUTH

Sussex Inlet Lions Club Park
Edgewater Ave (a dump point for RV's is located at Lions Club Park)



Thomson Street Complex
Thomson Street (next to skate park)

SWANHAVEN - Dyball Beach Reserve
Yarroma Ave

CHILDREN'S PLAYGROUNDS

Berrara Cove Reserve
Cnr Myrniong Grove & Silver Sands Dr.,
Berrara

Berrara Lagoon Reserve
Lakeland Ave, Berrara

Dyball Reserve
Lake Drive, Swanhaven

Ellmoos Reserve
near Sussex Inlet RSL - Jacobs Dr,
Sussex Inlet



Finkernagel Oval
Sandpiper Way, Sussex Inlet.

Jacob Ellmoos Reserve
near Chris Creek bridge - River Rd,
Sussex Inlet

Sussex Inlet Lions Club Park
Lakehaven Dr., South Sussex (a dump point
for RV's is located at Lions Club Park)



Learn to Ride
Thomson Street Complex, Thomson
St, South Sussex

Skate Park
Thomson Street Complex, Thomson
St, South Sussex

Third Avenue Reserve
Third Ave, Cudmirrah

Thomson St Sporting Complex
Thomson St, South Sussex

Sussex Inlet Golf Club

Tee Off in Paradise!

A Hidden Gem for Golfers of All Levels



Nestled in the heart of Sussex Inlet, our picturesque 9-hole course offers a relaxing yet challenging game for all skill levels. Enjoy lush fairways, native wildlife and a friendly clubhouse atmosphere.

Casual Play & Memberships Available
Affordable Green Fees & Cart Hire
Fully Licensed Clubhouse

7 Golfcourse Ave, Sussex Inlet
Call 02 4441 2259

YOGA

CUDMIRRAH HALL

32 Collier Drive, Cudmirrah

“do-able yoga for all levels”
BYO yoga mat or use one of mine.



Ph: 0414 509 154

Cudmirrah Community Yoga



**SOUTHERN CLASSIC
MOTORCYCLES**

MOTORCYCLE HIRE AND SCENIC TOURS

SUSSEX INLET

0478 770 013

FOR REHABILITATION OF MIND AND SOUL!
WWW.SOUTHERNCLASSICMOTORCYCLES.COM.AU

PLACES TO STAY

CARAVAN PARKS

Alamein Caravan Park

Alamein Rd, South Sussex

6 powered sites, 4 cabins

4441 2031

alameinpark@bigpond.com

Badgee Park

148 River Rd - 9 powered sites, 3
cabins, 5 on-site vans - 4441 2146

Dog friendly/RV friendly

badgeepark@bigpond.com

www.badgeepark.com.au

Cedar Pines Caravan Park

204 River Rd - 3 cottages - 4441 2254

Inlet Anchorage Caravan Park

200 River Road - 2 cottages

4441 2598

Lakeside Cabins & Holiday Village

36 Goonawarra Dr, Cudmirrah

20 powered sites, 6 cabins - 4441 2516

hello@lakesidecabins.com.au

www.lakesidecabins.com.au



Kalua Caravan Park

173 River Rd - 4441 2065

Riverside Caravan Park

25 Sussex Rd, South Sussex

10 powered sites, camp sites,

5 cabins - 4441 2163

riverside.caravanpk@bigpond.com

www.riversidetouristpark.com.au

Riviera Caravan Park

158 River Rd - 2 powered sites,

6 cabins - 4441 2112

enquiries@rivieracaravanpark.com.au

www.rivieracaravanpark.com.au

Seacrest Caravan Park

30 Sussex Rd, South Sussex - 5

powered sites, 8 cabins - 4441 2333

info@seacrestcaravanpark.com.au

www.seacrestcaravanpark.com.au

Siesta Caravan Park

165 River Rd - 4441 2706

Badgee Park

Absolute Water Front

Welcome to Badgee Park

Located on the pristine waterfront with 180
degree views to St Georges Basin

Boutique style park, close to town centre

**Luxury Cabins • Caravan Sites
Onsite Glamping Vans**



148 River Rd, Sussex Inlet

Phone: 02 4441 2146

Enquiries: Info@badgeepark.com.au

www.badgeepark.com.au

Surfside Cudmirrah Beach

54 Collier Dr Cudmirrah - 4 vans, 5
cabins, 6 powered sites
4441 2182 - 0499 412 172
info@surfsidecudmirrahbeach.com.au

Sussex House Caravan Park

199 Jacobs Dr - 3 cottages, 1 on-site van
Phone: 02 4441 3444
Email: realpropertyagents@gmail.com

Sussex Palms

40 Sussex Rd, South Sussex
5 powered sites, 9 cabins - 4441 2395
sussexpalms@gmail.com
www.sussexpalms.com

Swan Lake Holiday Park

Goonawarra Dr., Cudmirrah
20 powered sites - 4406 2060
swanlake@holidayhaven.com.au
www.holidayhaven.com.au

Talofa Caravan Park

178 River Rd - 2 sites - 4441 2214



**With over 120 caravan and
camping sites available
sussexinlet.nsw.au**



**PET-FRIENDLY
ACCOMMODATION
ON BEAUTIFUL
CUDMIRRAH BEACH**



COTTAGES, CABINS & HOUSES

Amaroo Resort

166 River Rd - 14 cottages
4441 2046 - 0412 446 247
amarooresort1@gmail.com

Berrara Beach Holiday Chalets

31 Berrara Rd, Berrara
26 chalets - 4441 2176
www.berrara chalets.com.au

Bunkys by the Sea

14 Myrniong Grove, Berrara
4441 2516
hello@bunkysbythesea.com.au
www.bunkysbythesea.com.au

Calm Waters Waterfront Cottages

187B Jacobs Dr. - 6 cottages
0491 037 886
info@southcoastholidayretreats.com

Christian's Minde

Opposite Sussex Marine Centre & RSL
1 cottage - 0427 394 898
juliewhittington68@gmail.com
www.christians-minde.com

Cillant Retreat

284 River Rd - 5 bungalows
0412 445 951 - 4441 1682
kirke8@bigpond.com
www.cillantiretreat.com.au

Cropper's Cabins

Off Pacificana Dr, South Sussex
6 cabins - 4441 2168
cropperscabins@hotmail.com

Kullindi

Ellmoos Rd, Jervis Bay Territory, ACT
5 units - 0428 496 048
mould@shoal.net.au
www.kullindihomestead.com.au

Laguna Lodge

160 River Rd - 9 cottages
4441 2315 - 0438 056 304
info@lagunalodge.com.au
www.lagunalodge.com.au

Jervis Bay Holiday Cabins

196 River Rd. - 4441 3578 - 2 & 3 bed
cabins, 2 bed disabled access cabins
www.jervisbayholidaycabins.com.au



Laguna Lodge

SUSSEX INLET

Luxury Waterfront Accommodation

160 River Road, Sussex Inlet
www.lagunalodge.com.au email: info@lagunalodge.com.au
Book with Tracy on 0438 056 304



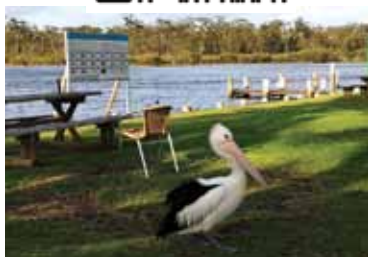
WATERFRONT ACCOMMODATION | EVENTS AND CELEBRATIONS | GROUP & FAMILY HOLIDAYS | WEDDINGS



Amaroo Resort

Rolin Armani Pty Ltd

漁人碼頭



0412 446 247

www.AmarooResortSussex.com.au

Mounties

2 Harbor St - 14 units - 4441 2123
sussex@mountiesgroup.com.au

Secret @ Sussex Waterfront Holiday Units

No 4 Nielson Lane
secretatsussex@gmail.com

Serendipity

Waterfront Holiday Home

188 River Road, Sussex Inlet
[airbnb/serendipitywaterfront](https://airbnb.com/serendipitywaterfront)

Sussex Inlet Boat House

172 River Rd. - 0438 269 972
Traditional beach house sleeping 10
plus glamping tiny house for couples
with jetty access to the pristine
Sussex Inlet.

Holiday Haven Resort

106A Pacificana Dr. 18 units
4441 2367
www.havenholidayresort.com.au

Sussex Shores RSL Club Units

Jacobs Dr. - 7 units - 4441 2076
www.sussexrslclub.net.au

The Blue House

37 Collier Drive, Cudmirrah
Contact Beth Suker – 0414 585 993
thebluehouse2540@gmail.com

The Farm

5 Bedrooms, 2.5 bathrooms, Open
living with fireplace.
Contact Donna: 0421 151 939 or
email: donna.doo5@hotmail.com

Calm Waters

Waterfront Accommodation



www.southcoastholidayretreats.com

The Springs Cottages on Swan Lake

1A Yarroma Ave, Swanhaven

6 cottages, 1 mud brick retreat

0418 218 240

info@thespringscottages.com.au

www.thespringscottages.com.au

Villa Nina at Sussex Inlet

Waterfront Apartment with jetty

69 Jacobs Drive, Sussex Inlet

0419148557

sandra@travelpeople.com.au

Woodburn

33 Jacobs Dr. - 0419 437 646

www.woodburnguestcottages.com.au

Villa Nina

at Sussex Inlet

Absolute waterfront apartment with jetty



Ph: 0419 148 557

email: sandra@travelpeople.com.au



serendipity

SUSSEX INLET

Waterfront Holiday Home

Serendipity Waterfront Estate is located on just short of one acre of land in the heart of Sussex Inlet. The property is three bedrooms, includes deep water jetty, games room and much more for all age groups.

A two minute walk to the centre of town - the perfect holiday house for family and friends to enjoy!



188 River Road, Sussex Inlet NSW 2540
airbnb/serendipity waterfront

THE MOST ROMANTIC LAKESIDE COTTAGE GETAWAY ON THE WHOLE SOUTH COAST.



THE
SPRINGS

COTTAGES ON SWAN LAKE

A place untouched by time



**RECENTLY SINGLED OUT BY THE
SUNDAY TELEGRAPH AS THE
ONLY RECOMMENDED HOLIDAY
DESTINATION IN NSW.**

Hidden away on the shores of Swan Lake, 30 minutes south of Jervis Bay, 'The Springs Cottages on Swan Lake' is a private sanctuary of 6 original 1950's cottages and separate mudbrick retreat house.

This exclusive adult accommodation is the perfect setting for groups, romantic couples or those seeking some time out in the healing heart of Nature.

Book now on **0418 218 240** or go to
www.TheSpringsCottages.com.au



PORTSIDE PROPERTIES



A personal approach to property

Portside Properties is not just another real estate company
– we're your dedicated partner in property.

www.portsideproperties.com.au

info@portsideproperties.com.au

02 4415 6122

Escape to Nature at Sussex

Two and three-bedroom self-contained holiday apartments and hillside villas surrounded by the Conjola National Park, with heated resort pool, playground, BBQs, picnic tables, and private access to the inlet.

Members Save - ask us how! Call 02 4441 2367 or visit our website.



www.havenholidayresort.com.au

MOTELS

Jopen Motel & Apartments

185 Jacobs Dr. - 6 motel units
0437 637 841 - www.jopencomplex.com



The Sussex Inlet Motel

184 Jacobs Dr - 13 motel units
0455 457 222 - enquiries@thesim.com.au
www.thesim.com.au

HOLIDAY RENTALS

L.J Hooker

1/159 Jacobs Dr. - 75 holiday rentals
4441 2900 - 4441 2135
sussexinlet@ljhooker.com.au
www.holidaywithus.com.au

Real Property Agents

2/168 Jacobs Dr. - Holiday rentals
4441 3444
www.realpropertyagents.com.au

Raine & Horne


2/170-172 Jacobs Dr.
50 holiday rentals
4441 2121
www.raine-horne.com.au



**The difference
between real estate
and real results.**

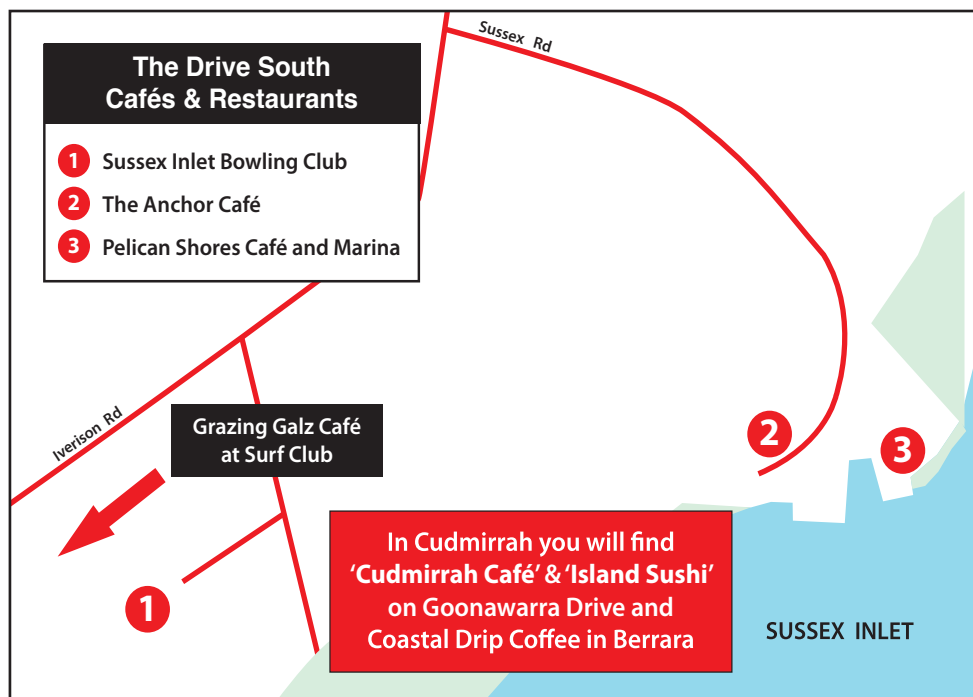
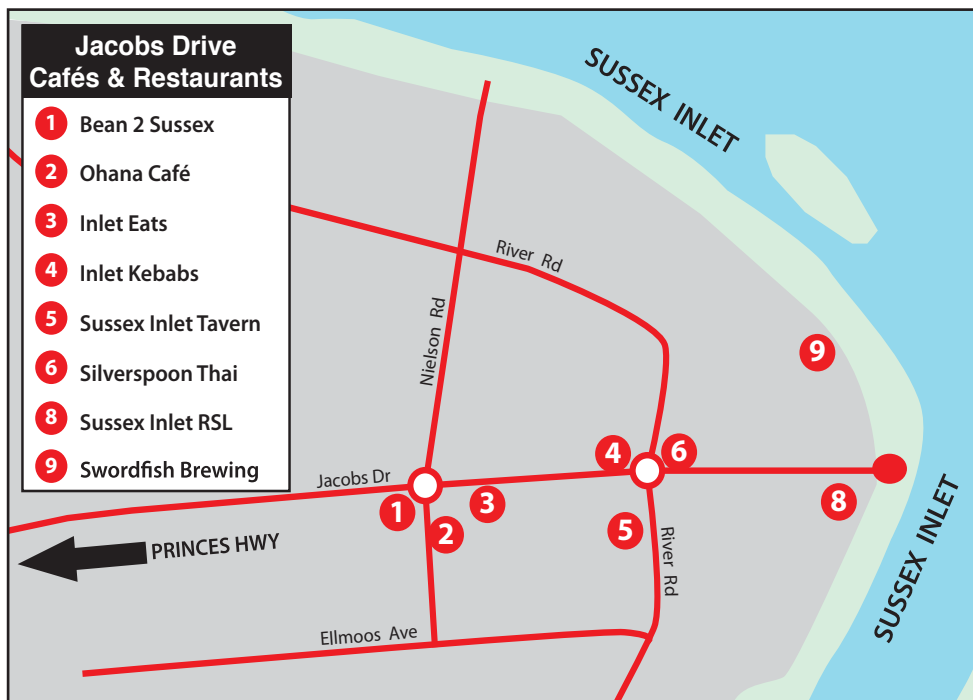
Don't just settle for a good
result, celebrate a great one.



 **LJ Hooker**

AMAZING FOOD EXPERIENCES @ SUSSEX INLET





Opening hours may vary in Holiday periods and through the winter

Bean 2 Sussex - Vietnamese

166 Jacobs Drive, Sussex Inlet

Ph: 4443 0793

Opening hours 6.30am- 4pm Monday to Thursday. Friday and Saturday 6.30 am to 6.30pm. Sunday 6.30am to 2.30pm.

Take Away and Eat in Options. Breakfast, lunch and dinner options - coffee, Vietnamese food, bacon and egg rolls, wraps, sandwiches, hamburgers, schnitzels, pasta, salads and cold drinks.



Chubby Mermaid Fish and Chips

176 Jacobs Drive Sussex Inlet

Ph: 44401 0619

Our local fish and chip shop offering a range of freshly cooked fish, chips, scallops, prawn cutlets and cold drinks. Fresh seafood to buy as well to cook at home. Opening hours 9 am to 7.30pm Monday to Sunday. Order online @ www.chubbymermaidtakeaway.com

Dinh Hot Bread & Cake Shop

Open from 7:30am-4pm

1/183 Jacobs Dr Sussex Inlet

Ph: 4441 1385 - Rolls, bread, cakes, Vietnamese rolls and cold drinks.

El Cantina - Food Truck

El Cantina serves Latin American fusion with weekly chef specials offering restaurant quality dishes in beautiful locations from their amazing food truck.

See facebook and instagram for menus and opening hours.

Grazing Galz Kiosk and Catering

@ The Surfclub - Ph: 0421 752 203

email: thegrazinggalz@gmail.com

Take away and eat in options.

Specialising in grazing tables, platters and grazing boxes with cheeses, antipasto, dips and slices.

Inlet Butchery

181 Jacobs Drive, Sussex Inlet

Ph: 4441 2034

Opening Hours: Mon - Sat 8am to 5pm. Nestled in the heart of Sussex Inlet, our family owned butchery offers premium meat and exceptional service. We pride ourselves on quality and freshness featuring hand picked costs and handmade gourmet sausages that delight every plate.

Order Online for store pickup or online delivery @ www.inletbutchery.com

Inlet Eats

170 Jacobs Drive, Sussex Inlet

Ph: 4480 3043 - Opening Hours: Mon

- Sun 7:30am to 3pm - Take away & eat in breakfast and lunch options. Coffee, bacon and egg rolls, quiche, salads, wraps, sandwiches & drinks.



Inlet Kebabs and Spuds

179 Jacobs Drive, Sussex Inlet
Ph: 0412 560 789
Open Wed to Sun 11.30am to 2pm
and 5pm to 8pm.



Ohana Café and Ice Creamery

168 Jacobs Drive - Phone 4443 2530
Opening Hours 6am to 5pm Monday
to Thursday, 6am to 7pm Friday and
Saturday, 6am to 4pm Sundays
For delicious sushi rolls, fresh salads,
salad rolls, bacon and egg rolls, fresh
seafood and fish specials.

Pelican Shores Café and Marina

28 Sussex Inlet Rd Sussex Inlet
Ph: 4441 3099 Opening Hours -
Thursday to Monday 8am to 4pm
Also open for events.
www.pelicanshorescafe.com.au

Riviera Caravan Park Shop

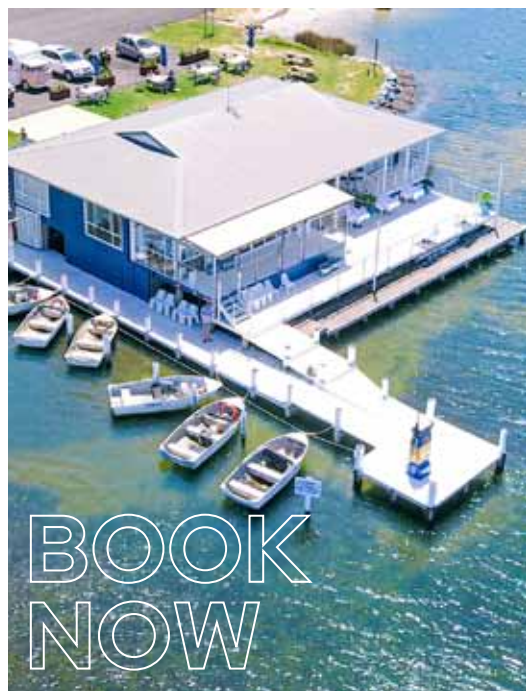
158 River Rd Sussex Inlet
Ph: 4441 2112
Opening Hours: 8am to 4:30pm
Coffee, cold drinks, hot food and ice creams.

Silver Spoon Thai Restaurant

185 Jacobs Drive, Sussex Inlet
Ph: 0481 485 801
Thai restaurant with takeaway options
Hrs Wed to Sun 11:30am - 2.30pm &
5-9pm. Tue 5-9pm.

Spar Supermarket

167 Jacobs Drive Sussex Inlet
Ph: 4441 2264 - Opening Hours: 7am
to 7pm. Delicatessen, BBQ chickens,
salads, bread rolls, fresh fruit and
vegetables, butchery.



Pelican Shores

CAFE + MARINA

02 4441 3099

www.pelicanshorescafe.com.au
28 Sussex Road, Sussex Inlet



Printed copies of this map are available from
the Sussex Inlet Neighbourhood Centre

Sussex Inlet Bakery and Cafe

Open from 7:30am-4pm

169 Jacobs Drive Sussex Inlet
Ph: 4403 7732 - Rolls, bread, pies,
cakes, coffee, sandwiches, Vietnamese
rolls and cold drinks

Swordfish Brewing

187D Jacobs drive - 4441 2268
300 seat restaurant right on the
beautiful Sussex Inlet. Open
Wednesday - Sunday 12pm - 9pm
email: info@swordfishbrewing.com.au
www.swordfishbrewing.com.au

The Anchor Café and Takeaway

30 Sussex Road, Sussex Inlet
Ph: 4412 0581 - Eat in or takeaway
Fill your belly with Bacon and Egg
rolls, Pancakes, Fish and Chips,
Hamburgers, Chicken Burgers, wraps.
Opening Hours - 7am to 7pm Friday

& Saturday, 7am to 4pm Sunday,
Monday, Tuesday and Wednesday,
Closed Thursday.

Wicked Bites Pizza

193 Jacobs Drive, Sussex Inlet
Ph: 4441 0735

Open 6 days - closed Tuesday - From
5pm to late. Influences from Greek and
Indian cuisines.



**Come in and feed your hunger, quench
your thirst and enjoy the view!**

Located 30 Sussex Inlet Road, Sth Sussex Inlet near Marine Rescue
find us on Facebook and Instagram.

Phone 4441 0581

BEACH & LAKE FOOD

BERRARA

Located next to the Berrara Beach Chalets office. **Coastal Drip Coffee** for amazing coffee and sweet treats.

Hours vary see facebook for opening hours.



CUDMIRRAH

Cuddy Café and General Store

14 Goonawarra Drive, Cudmirrah

A great selection of breakfast and lunch options - including coffee, bacon and eggs, avocado on turkish, fish and chips, burgers, pizza, steak sandwiches, wraps, cold drinks and smoothies.

Opening Hours: 7.30am to 2pm

Pizza on Fri and Sat 5:30pm to 7pm

In holiday periods hours are extended check with cafe phone : 02 4441 3006

Island Sushi

Lakeside Caravan Park, Cudmirrah

Opening Hours: Thur-Sun 11am to 2pm

Amazing sushi poke bowls and other Island Sushi specials. Check islandsushi.com.au for updates.





Check Out

Island Sushi.com.au

Open Thurs-Sun 11am ~2pm

36 Goonawarra Dr., Cudmirrah t 2540@ Lakeside Cabins

BREWERY, CLUB & PUB FOOD

Sussex Inlet Bowling Club

St Georges Ave, Sussex Inlet

Ph: 4441 2087

www.sussexbowlo.com.au

Opening Hours: Open 7 days a week.

Breakfast: Sat and Sun from 8am.

Lunch from 11:30am to 2:15pm. Dinner from 5:30pm

Sussex Inlet RSL Club

200 Jacobs Drive, Sussex Inlet

Ph: 4441 1354

www.sussexrslclub.net.au

Opening Hours: Open 7 days a week.

Lunch: 12pm to 2pm

Dinner: Mon/Tue 5:30pm to 8pm

Wed - Sun 5:30pm to 8:30pm

Sussex Inlet Tavern

191 River Rd, Sussex Inlet

Ph: 4441 0391

Opening Hours: Open 7 days a week for Lunch & Dinner

www.facebook.com/SussexTavern

Swordfish Brewing

187D Jacobs drive - 4441 2268

300 seat restaurant right on the beautiful Sussex Inlet. Open

Wednesday - Sunday 12pm - 9pm

email:info@swordfishbrewing.com.au

www.swordfishbrewing.com.au



SWORDFISH

BREWING

187D Jacobs Drive, Sussex Inlet NSW

Open Wednesday — Sunday 12pm - 9pm

(02) 4441 2268

www.swordfishbrewing.com.au





**Offering magical water views, friendly staff,
cold beverages and something to do for all ages!**



**Barefoot Bowls • Outdoor Playground
Courtesy Bus Everyday • Free WiFi • TAB • Keno**

22nd *End*
Restaurant

**22nd End Restaurant
OPEN 7 DAYS**

St Georges Avenue, Sussex Inlet NSW 2540

Phone: (02) 4441 2087

www.sussexbowlo.com.au

Email: reception@sussexbowlo.com

Our Local Producers

Sussex Inlet has some amazing fresh produce that you can purchase locally from our producers and farm shops along the Sussex Inlet Road.



The **Greenhouse Farm Shop** has a great range of produce.



- Locally grown vegetables
- Fruit
- Dairy, Cheese and Eggs
- Meat and Deli items
- Sussex Sourdough
- Jams, Chutneys and Preserves
- Plants and Crafts

Open Wednesday to Sundays 10am-4pm
and longer hours in the summer period.



For the freshest strawberries call in to the **Sussex Inlet Strawberry Farm** when you see the strawberry sign out or see updates on facebook. Figs, garlic and strawberry sauce also available.





Sussex Soughdough – made by passionate local baker Daniel Turner and available from the Sussex Greenhouse and at the weekly Saturday Pop-Up Stall near the Cinema from 9am-11.30am.

The Green Shed -Maurizio has been growing vegetables in Sussex Inlet for over 30 years, call in for pumpkins, eggs and other vegetables in season, Locally Made Jams and Chutneys.



Kate's Jams and Chutneys are extremely popular and are available for sale at the Inlet Eats and proceeds are donated to Inasmuch Aged Care.



The Safe Navigation Action Group also make jams and chutneys and these are available from the Sussex Inlet monthly markets or at the Neighbourhood Centre.



White Feather makes a great range of preserves and chutneys Available from Little Eadies Cafe or the Sussex Inlet monthly markets.



PLACES TO SHOP

ALCOHOL

Ice Box Liquor

165 Jacobs Drive - 4441 1174

A wide range of Australian boutique wines, imported spirits, champagnes, ciders and beer.

Open 9am to 6pm Sunday to Thursday, Friday and Saturday 9am to 8pm.

Sussex Inlet Tavern

(*& Bottle Shop*)

Cnr River Rd & Ellmoos Ave

Tavern & Drive through bottle shop

4441 0391

BOUTIQUES AND GIFTS

Coves

191 Jacobs Drive

For high quality Clothing, Jewellery, Accessories and gifts.

Opening Hours: 10am - 4pm Mon.

Tue, Wed and Fri 9am - 3pm.

Sat 8.30am - 12pm - Closed Sun.

Squirrel Trading Co

2/183 Jacobs Drive

gifts, homewares & plants

Debbie - 0435 516 803



The Inlet Spot Arts & Crafts

Nielson Rd - 0408 565 520

www.sussexinlet.info/theinletspot

Quality locally handmade arts & crafts

Thingamabob's Place

4/183 River Rd (left 2nd R/about)

Kids, Ladies, Mens & Resort style clothing. Homewares -Tilley/

Woodwick candles, Giftware and

Sussex Souvenirs

02 4441 0488



FISHING AND BOATING

Bosun Wholesale

Chandlery, safety equipment, electronics, navigation equipment, stainless steel fastenings, trailer equipment - hrs - 8am to 4.30 Monday to Friday - 4441 2791

Pelican Shores Café & Marina

28 Sussex Road

4441 3099 – 0478 044 737

Petrol available as an on water service



Riviera Kiosk

158 River Rd (along cycleway)
bait, fishing tackle - 4441 2112

Sussex Inlet Marine Centre

The river end of Jacobs Dr. (opp RSL)
Petrol, fishing tackle, kiosk, boat hire,
SUP hire, kayak hire etc. - 4441 2086

This business is currently closed

Sussex Tackle Shop & Toy Box

168 Jacobs Dr - Ph: (02) 4441 1660
Bait, fishing tackle and equipment,
toys, games and more.

The Anchor Café and Takeaway

1 Sussex Rd - drinks, coffee, cakes,
hamburgers, fish and chips, food,
lollies, bait
4412 0581



FUEL/MARINE SUPPLIES

Cudmirrah General Store, Café & Woodfire Pizzeria

14 Goonawarra Dr. - Groceries, bait,
petrol, café. - 4441 3006

Pelican Shores Café & Marina

28 Sussex Road
4441 3099 – 0478 044 737
Petrol, fishing tackle, boat hire

COVES

Clothing. Accessories. Jewellery. Gifts & more



Sussex Inlet Service Station

1 Jacobs Dr. Petrol, oil, bait, groceries, newspapers, gas bottle refills. - 4441 2193

Sussex Inlet Marine Centre

This business is currently closed

The river end of Jacobs Dr. (opp RSL)
Petrol, fishing tackle, kiosk, boat hire, SUP hire, kayak hire etc. - 4441 2086

HARDWARE/BUILDING SUPPLIES

Sussex Inlet Hardware & Building Supplies

191 Jacobs Dr. - 4441 1200
www.thriftylink.com.au/store/sussex_inlet



MECHANICAL

Moby's Mobile Mechanical Repairs

Jamie Moberget - 0412 301 967
mobysmechanical@gmail.com

Sussex Inlet Mechanical Services

2/4 Flood Avenue
4441 1955 - 4441 3055



OP SHOPS

Inasmuch Opportunity Shop

195 Jacobs Dr. - Bric-a-Brac
4441 1666

Seek & Find Op Shop

2/176 Jacobs Dr. Clothing, linen, bric-a-brac - 4441 3605

PET SUPPLIES

Sussex Inlet Veterinary Surgery

179 River Rd - 4441 1011



Spar Supermarket

Jacobs Dr. - 4441 2264

PHARMACY/MEDICAL

Sussex Inlet Pharmacy

192 Jacobs Dr. All prescription requirements, gifts, home health specialists, Medicare Agent
4441 2444

Spar Supermarket

Jacobs Dr. - 4441 2264

SEAFOOD

Fresh seafood is available from the Seafood van on Jacobs Drive. Prawns and oysters also available from Pelican Shores, Chubby Mermaid and at Spar Supermarket in holiday periods.



SPECIALITY STORES

King Of The Pack

176 Jacobs Dr. - 4401 2455

Lions Book Shop

174 Jacobs Dr. - Second hand books

Lolly Heaven

Shop 3/183 Jacobs Dr.

Ph: 0469 796 426



Sussex Inlet Golf Club

7 Golfcourse Way - kiosk, pro-shop.

4441 2259

Sussex Treasure Box

3/176 Jacobs Drive

Bargains, homewares & gifts



STATIONERY/NEWSPAPERS

Cudmirrah General Store,

Café & Woodfire Pizzeria

14 Goonawarra Dr. - Groceries, bait,
petrol, café. - 4441 3006

Inlet Newsagency

5/172 Jacobs Dr.

4403 7730

Sussex CTC

The home of the Sussex Inletter also offers a range of office services and speciality products including:

Email, scanning, Internet, laminating, photocopying, phones, USBs typing, resumes and general secretarial work.

Local calendars recipe books, jams and candles. Phone 02 4441 0921

Sussex Inlet Post Office

196 Jacobs Dr. - Stationery, various banking agencies, instant photos and Darrell Lea Chocolates - 4441 2099



Australia Post



WHAT YOU CTC HAS TO OFFER YOU

- **PUBLISHING OF YOUR LOCAL COMMUNITY NEWSPAPER**—weekly
- **ADVERTISING**—In the weekly Inletter
- **CLASSIFIEDS**—Including but not limited to Death and Funeral Notices, Garage Sales, Lost & Found, For Sale etc.
- **COMPUTER & INTERNET USE**—For public use at reasonable rates
- **PRINTING & SCANNING**
- **BE CONNECTED**—Join for free
- **DROP IN CENTER**—Free drop in centre on the last Thursday of the month for all your tech needs
- **GENERAL OFFICE SERVICES**—emailing, photocopying, resumes, brochures, typing

Shop 7/168 Jacobs Drive Sussex Inlet

Phone 04 4441 0921 email sussexinletctc@exemail.com.au

ABN 67618446261

SUPERMARKET/FOOD SUPPLIES

Cudmirrah General Store, Café & Woodfire Pizzeria

14 Goonawarra Dr. - Groceries, bait,
petrol, café. - 4441 3006

Community Pantry

Jacobs Dr. Sussex Inlet
Ph: 0492 859 848



Dinh Hot Bread & Cake Shop

1/183 Jacobs Dr Sussex Inlet
Ph: 4441 1385

Rolls, bread, cakes, Vietnamese rolls
and cold drinks.



Sussex Greenhouse

392 Sussex Inlet Road
Ph: 0488 422 246

Farm shop with locally grown
vegetables, fruit, dairy, cheese, eggs
and Sussex Sourdough



Inlet Bakery and Café
next to Spar - Jacobs Dr.

Inlet Butchery

181 Jacobs Dr.

Opening Hours 8am to 5pm Monday to
Saturday. Quality fresh meat, amazing
handmade gourmet sausages.

online delivery and online ordering -

www.inletbutchery

4403 7732 - 0420 388 784



Spar Supermarket

Jacobs Dr. - Meat, vegetables,
groceries, delicatessen - 4441 2264

Sussex Inlet Service Station

1 Jacobs Dr. Petrol, oil, bait, groceries,
newspapers. - 4441 2193

SURF AND BEACH

Ocean & Earth Retail Surf Shop

Cnr of Sussex Inlet Rd and The Springs
Rd - 4441 2482



Sussex Surf Shack

6/172 Jacobs Dr. - Surf wear &
accessories - 4441 3359



St Vincent de Paul Society
NSW
good works

**If you are suffering hardship,
please reach out to your
local Vinnies Conference
in Sussex Inlet**

Call: 0472 548 073

**Monday to Friday
between 9am and 4pm**

TRADES & SERVICES

ACCOUNTANTS

Bosco Accounting

Phillip J. Kennedy - 185 Jacobs Dr.
4441 3733

admin@boscoaccounting.com
www.boscoaccounting.com

SLB Accounting Services

3/196 Jacobs Dr.
4441 1298 – 0417 064 127
slbaccounting@bigpond.com

AGED CARE

Inasmuch Community Inc.

Offering high quality residential aged care needs including respite and high care services for dementia and palliative care
Phone 44411666
consumer@inasmuch.org.au
www.inasmuch.org.au



Inasmuch Aged Care Services

High quality residential aged care services tailored to meet your needs

Services include:

- Residential care and short term respite
- Specialist high care unit for quality dementia and palliative care
- Day centre services

Phone 02 4441 1666

Email operations@inasmuch.org.au

Dementia Friends Group

A local group to support carers and people with dementia. Regular meetings with guest speakers are held at the Neighbourhood Centre
Phone Kevin Phillips: 0408 283 832 for more information.

AIR CONDITIONING

JD AIR

Air Conditioning Sales & Installations
Josh - 0400 806 286
www.jdair.com.au

Just Air

Air Conditioning - Ross Humble
4441 3177 - 0497 946 472

AMBULANCE - 000

APPLIANCE REPAIRS

BF Services

Fridges, air conditioners, dishwashers, ovens. Locally owned in Sussex Inlet and fully licenced - Ph: 0449 124 212

ATMS/BANKING

ATMs inside

Spar Supermarket
Sussex Inlet Bowling Club
Sussex Inlet Liquor
Sussex Inlet RSL
Sussex Inlet Service Station
Sussex Tavern

ATMs outside

Real Property Agents
Sussex Inlet Neighbourhood Centre

ANTENNAS

Vision Antennas & Audio

Sion Wessell - 4441 3838 - 0405 385 736

visionantennas@bigpond.com

ASBESTOS REMOVAL

Coastline Asbestos Removal

0411 566 379

mickndani@gmail.com.au

Sussex, Bay & Basin Metal Roofing

Asbestos roof removal

4441 2327 - 0422 143 755

BANKING

Post Office

Bank@Post is an agency service provided by Australia Post on behalf of over 80 financial institutions including CommBank, Westpac, NB and ANZ. Offering services for individuals or businesses to make withdrawals, deposits, bill payments and balance enquiries.

2/196 Jacobs Dr. - 4441 2099



BEAUTY

The Beauty Salon

11 Thora Street, Sussex Inlet

Nails, Waxing, Spray Tan, Facials

Phone or text 0491 648 414 for an appointment

BOAT BUILDING

Ian's Carpentry & Boat Building

4441 3095 - 0412 450 648

plain_sailing@bigpond.com

BOAT HIRE

Pelican Shores Café & Marina

4441 3099 - boats & paddleboards



Riviera Caravan Park

4441 2112 - canoes only

Sussex Inlet Pontoons

0414 803 644

www.sussexinletpontoons.com.au

BOWLS

(Courtesy bus available from both venues)

Sussex Inlet Bowling Club

4441 2087

Sussex Inlet RSL Club

4441 2076

BRICKLAYERS



Ian Boyton

4441 1171 - 0411 751 880

Parth Bricklaying Pty Ltd

4441 2921 - 0427 412 924

Sussex Inlet Brick & Block Laying Pty Ltd

Brett Fletcher - 0411 335 347
sibablock@gmail.com

BUILDERS



BSK Building and Carpentry

Stephen Kelly- 0431 168 558

Ben Kelly - 0421230 497

Email: bskellybuild@gmail.com

J.E.J. Building – Jay Johnson

0421 324 060

jejbuilding@hotmail.com

Lukas Builder Pty Ltd

0402 159 478

lukasbuilders@optusnet.com.au

Ohana Homes

Brendan Smith 0416 095 659

brendan@hotmail.com

Riviera Building & Construction Pty Ltd.

Michael Jones - 0407 009 611

rivierabuilding@westnet.com

Rohan Daley

0422 669 326

rohan.daley@y7mail.com

S.I.R. Homes Pty Ltd

Peter van Ovost - 0421 192 498

Sureline Building Group

Jamie Allan - 0422 172 978

jamieallan@outlook.com

BUILDING SUPPLIES/HARDWARE

Sussex Inlet Hardware & Building Supplies

191 Jacobs Dr. - 4441 1200

www.thriftylink.com.au/store/sussex_inlet/

Isons

02 4421 4288

Delivery to Sussex Inlet 4 days/week

CANOE HIRE

Riviera Caravan Park

4441 2112



CAR DETAILING

G & F Car Clean & Detail

Greg Freeman - 0401 155 379

Rob's Mobile Bumper Repairs

0432 161 457

robsmobilebumperreparis@gmail.com

CARPENTERS

BSK Building and Carpentry

Stephen Kelly - 0431 168 558

Ben Kelly - 0421230 497

Email: bskellybuild@gmail.com

Cannon Carpentry

Jeff Cannon

4441 1629 - 0449 905 586

David Brady Carpenter & Joiner

0499 117 942

davidbradycarpenter@yahoo.com.au

Fix This Build That Carpentry

0402 153 700

fixthisbuildthatcarpentry@gmail.com

GET IT DONE Handyman Service

Greg Casha - 0431 554 479

greggetitdone@gmail.com

Harbrow Carpentry & Asbestos Removal

Mick Harbrow - 0411 566 379

Ian's Carpentry & Boat Building

0412 450 648

plain_sailing@bigpond.com

Jarrad Severino

0488 798 444

Leigh Barnett Carpentry

0401 424 240

P & S Carpentry Services

Peter Nicol - 4441 3703 - 0427 206 640

peternicoll@54.com

Stuart Hill - Carpentry & Plastering

0418 848 241 - 4441 1256

CARPET CLEANING

The Carpet Guy

Carpet & Upholstery Cleaning

0437 757 707 - 1800 776 373

www.carpetguy.com.au

CAT GROOMING

Sussex Inlet Vet

179 River Rd - 4441 1011

CHEMIST

Sussex Inlet Pharmacy

192 Jacobs Dr. - 4441 2444

CHILD CARE

Sussex Inlet Early Learning Centre

12 Murre St, Sussex Inlet

02 4441 3483

sussexinletlc@gmail.com

c-Verse One Tree Community Service

1800 919 995 - enrolments@onetree.org.au

Before & after school care & vacation care

Waratah Family Day Care Centre

02 4441 3483

waratahfdc@optusnet.com.au



Waratah Family Day Care Centre Sussex Inlet

(Shoalhaven Family Day Care)

Hours: 8am - 6pm Mon to Fri

4 children under the age of 5 years
and in school holidays up to 3 children of
Primary School age

For more information:

Jan Thompson

Phone: 0412 078 096

Email: waratahfdc@optusnet.com.au

CHURCHS & WELFARE SERVICES

Anglican

Iverison Rd - 4441 2002

Sunday 9.30am, Evening 5.30pm (6pm Dec/
Jan)

Catholic

Banksia St. - 4455 1313

Saturday 5pm - Wednesday 8.30am

Christian Life Centre (AOG)

At the Catholic Church on Sundays
0412 418 577

St Patrick's Catholic Church

www.milton.dow.org.au



MASS TIMES

St Patrick's Catholic Church

22 Banksia St. Sussex Inlet
Sat 5pm and Wed 8.30am

Holy Family Catholic Church

Green St. Ulladulla
Sun 9am, Tue 10am, Thur 10am

St Mary Star of the Sea Catholic Church

Corks Lane, Milton
Fri 10am plus 5pm on 1st Sun of the month

*'See notice board for Easter and
Christmas Mass times'*

www.milton.dow.org.au

St Vincent De Paul

0472 548 073

CINEMA

Historic Inlet Cinema

4441 2884 - www.inletcinema.com.au

CIVIL CELEBRANT

Broni

0427 725 831

bronwynngalea@gmail.com

Melissa Sheehy

Marriage Celebrant/JP

0412 671 878

melissasheehy.celebrant@gmail.com

CLEANING

Inlet Laundry & Cleaning Services

0414 268 203

K Pow - Cleaning & Organising

Kiri - 0409 711 197 - 0411 779 911

Sussex Cleaning Co.

Barb - 0434 213 370

barb@sussexcleaning.com.au

CLUBS

Sussex Inlet & Basin Yacht Club (sibyc)

0413 617 083

www.sibyc.com.au

Sussex Inlet Bowling Club

St Georges Ave, Sussex South

4441 2087



www.inletcinema.com.au

Sussex Inlet Lions Club

Laurie Stretton – 0437 038 011

Sussex Inlet Men's Shed

0417 420 920



Sussex Inlet River Dragons

Email: sirdinfo2023@gmail.com

Paddling on Tue & Thur 3pm, Sat 9am,
meet at RSL Boatshed



Sussex Inlet RSL Club

Jacobs Dr., Sussex Inlet - 4441 2076

Sussex Inlet RSL Sailfish Fishing Club

Joan Dickson – 0421 250 894

joan.dickson@bigpond.com

COMPUTER & INTERNET ACCESS

Communication Technology Centre (CTC) - Home of the Inletter

7/168 Jacobs Dr. - 4441 0921

RSL

Free WiFi - Internet kiosk - 4441 2076

COMPUTER & INTERNET SERVICES

Ian's Computer Repairs & Sales

4441 3095 - 0412 450 648

Sussex Inlet Computers

4441 0559

Wi-Net Communications

Alan - 0408 464 623

CONCRETERS

Berrara Beach Concreting

Peter Dunnett - 0419 232 605

petemary3@bigpond.com

Coastal Concrete Pumping

Brad Wood - 0427 229 909

East Coast Constructions P/L

Justin Omeara - 0409 229 358

justinomeara3@outlook.com

J Bourke Concrete Services

Jake & Rob Bourke

0421 794 854 - 0458 722 455

CONVEYANCERS

About You Conveyancing

Licensed Conveyancer

5/114 Princes Highway,

ULLADULLA, NSW, 2539

Ph: 0421 229 711

Billie-May Ewings

4408 3030

bm@bmeconveyancing.com.au

www.bmeconveyancing.com.au

South Coast Conveyancing

1/185 Jacobs Dr - 4441 2563

4441 1686 - 0400 041 203

www.kennedycooke.com.au

Southern Property Transfers

Leah Payne - 4443 4240

www.southernpropertytransfers.com.au

leah@southernpropertytransfers.com.au

DANCE CLASSES

The Ballet School Sussex Inlet

Email - nc.pritchard80@gmail.com

DENTISTS

Dr Penelope Wilson

117 Jacobs Dr. - 4441 2504

DISABILITY ASSISTANCE

4421 4861

DOCTORS (see Medical Centres)

DOG GROOMING

Coastal Pooches-Dog Grooming

Phone 0476 156 630

Dirty Dog Depot

Maxine - 0409 176 625

Fidos K9 DIY Dogwash

\$10 Dogwash! - Neilson Rd -
Alongside Cellar Hill Bottleshop

Kim's K9 Klenz

0467 564 565

Sussex Inlet Vet

179 River Rd - 4441 1011

ELECTRICIANS

Beck Electrical Services

Phillip Beck 0414 632 797
beckelectrical@gmail.com

Coast Wide Electrical

Dylan Smith - 0410 461 150

Danny Douglas Electrical

4441 1620

Darren Streeter

0405 577 983

Dynamic Tradies

1300 846 264

JD AIR

0400 806 286 - joshdnw@gmail.com



www.jdair.com.au

Electrical ⚡ Air Conditioning ⚡ DATA ⚡ Home Theatre Installations
Underfloor Heating ⚡ Security Camera Installations ⚡ Ceiling Fans
New Builds ⚡ Renovations ⚡ Test & Tag ⚡ LED Lighting
TV Antenna Repair & Installations ⚡ Garden Lighting

EMERGENCY SERVICES

Ambulance - 000

Fire Brigade - 000

Sussex Inlet RFS – 4441 1101

Marine Rescue

Radio Room - 4441 3555



NRMA - 131 111

Road Service/Breakdown Service

**ORRCA - Marine Mammal Hotline
02 9415 3333 - www.orrca.org.au**

Police - 000

Sussex Inlet Police - 4441 2665

Nowra Police - 4421 9699

**Police Assistance Line (PAL)
131 444**

**Crime Stoppers (anonymous)
1800 333 000**

SES - 132 500

**Wildlife Rescue South Coast
0418 427 214**

EXCAVATIONS & TIPPERS

Swanhaven Excavations

Mark Wroe – 0402 290 895

swanhavenexcavations@hotmail.com

Rays Tipper Service

Ray Stein – 0437 034 710

raystein1@hotmail.com

EXERCISE & FITNESS CLASSES

**Mad About Fitness, Pilates &
Sussex Inlet Stand Up Paddle**

Madeline Rayner - 0421 120 376

www.sussexinletsup.com

Gym & Fitness Wandandian

May Braap - 0405 194 000

gafwandandian@gmail.com



EXERCISE EQUIPMENT

*Placed along cycleway off Gordon Street
(near RSL Club)*

FENCING

Better Fences

Nathan Todhunter - 0410 579 075

info@betterfences.com.au

Galaxy Fencing Contractors

R. Lidbetter

0412 006 300 - 0423 047 173

Inlet Fencing

Ben Whipp - 0422 569 550
www.inletfencing.com.au

FIBREGLASS REPAIRS

**Rob's Mobile Bumper Repairs
Fibreglass Repairs**
0432 161 457

FLOORING

Coastal Flooring
Dean Stanwell – 0418 222 903

N & B Flooring
Daniel - 4441 1622 - 0411 029 776

FIRE BRIGADE - 000

FUEL

Cudmirrah General Store
Goonawarra Drive Cudmirrah
Phone: 4441 3006

Pelican Shores Café & Marina
28 Sussex Rd, South Sussex
4441 3099



Sussex Inlet Service Station
1 Jacobs Drive, Sussex Inlet
4441 2193

FUNCTION ROOMS AND HALLS FOR HIRE

Thomson Street Community Hall
Thomson St
BOOK ONLINE:



Cudmirrah Hall
Shoalhaven City Council - 4429 3111

Ellmoos Centre
Jacobs Drive next to the Cinema
for community events and activities
to book: events@sussexinlet.nsw.au

Neighbourhood Centre
Jacobs Dr. - 4441 2003

Sussex Inlet Bowling Club
St Georges Ave - 4441 2087

Sussex Inlet RSL
Jacobs Dr. - 4441 2076

Sussex Inlet RSL Sub-Branch
Nielson Rd - 4441 2548

Sussex Inlet Tavern
River Rd - 4441 0391

GARDENS

Cudmirrah Community Garden
Matt Wells: 0429 669 393

Men's Shed Community Garden
0417 420 920



Sussex Inlet Community Centre



**ONLINE
BOOKING
SYSTEM**



THOMSON STREET, SUSSEX INLET

GLAZIER & GLASS REPAIRS

Sussex Inlet Glass

Pete – 0475 405 020

GOLF

Sussex Inlet Golf Club

Golfcourse Way - 4441 2259

www.sussexinletgolf.com.au

GRAPHIC DESIGN

Scott Morgan - Multimedia Design

0414 785 776

info@scottmorgan.com.au

www.scottmorgan.com.au

HAIRDRESSERS/BARBERS



Cut 'N' Dry

Janene French (Wed-Thurs-Fri)

32 Ellmoos Ave - 0421 382 482

Exquisite Hair

Phone. - 4441 3296

Appointment only contact via facebook

Inlet Hair Fashion

5/183 River Rd - 4441 2129

J D Hair

86 Suncrest Ave - 4441 1903

Sonia's around the Bay Mobile Hair

Cutting Service - 0422 489 171

Sunset Barbers

Jacobs Dr. near Post office

Sussex Barbers

Vicki Brooks - mobile service

Phone 0498 212 124

HANDYMAN/HOME/GARDEN & LAWN SERVICES

Canfix Handyman

Robert Carr - 0429 159 069

Ed's Property Maintenance

0417 496 793

Harry's Garden Care

0409 326 660

Inlet Tree Services

Mitchell Pope & Jackson Daley

0439 005 464

Island Lawn and Property Services

Kev Sigsworth - 0447 838 384

Josh's Lawnmowing

Josh Brien - 4441 3274 - 0401 068 469

K Pow - Handyman Service

Kiri - 0409 711 197 - 0411 779 911

Martha Farrugia - Home Services

Gardening, cleaning, support services

Phone - 0421 564 311

Paul Farrow

4441 1437 - 0403 509 433

Peter Shield

0403 666 062

Reef Home Maintenance

Steven Ings - 0411 485 519

Scott Miller

0409 316 714

sosscabbling@optusnet.au

The Lawn Guy

David Ward - 0434 629 111

We Care Garden & Property Maintenance

Ben Turner – 0402 584 115



MARINE RESCUE SUSSEX INLET

24/7 emergency service for local & visiting boaters on our waterways



Just call on VHF channel 16
or Phone 02 4442 8100



Download the FREE Marine
Rescue NSW App.
Get weather and tide info
and log on AND off with us
on your mobile phone.



Make sure everyone on board
is wearing a lifejacket.



Check the conditions &
weather before heading out.

Boat and RWC License Courses at Sussex Inlet Base. Running Now.
Email: boatlicensing.sussexinlet@marinerescuensw.com.au or call the base for details.

In an emergency,
call for help on
VHF Channel 16
Triple Zero (000)

DONATE



Marine Rescue Sussex Inlet. 30B Sussex Road, South Sussex Inlet
02 4442 8100. sussexinlet@marinerescuensw.com.au



Volunteers saving lives on the water

HEARING

Australian Hearing

Lockhart Medical Centre
180 Jacobs Dr - 131 797 (for appt.)

Health Direct Australia

Registered nurse available for
assessment 24 hours a day
1800 022 222

Jervis Bay Hearing

4441 8886

HOME CARE

Inasmuch Home Care Services

4441 1666

homecare@inasmuch.org.au

www.inasmuch.org.au



Inasmuch Home Care Services

*your local service providing flexible and
responsive services tailored to meet your needs*

Services include cleaning, personal care,
gardening, food, laundry, shopping
and health care

Phone 02 4441 1666

Email homecare@inasmuch.org.au

HOSPITALS



Milton Hospital

Princes Highway, Milton - 4455 1333

Nowra Private Hospital

Weeroona Place, Nowra - 4421 5855

Shoalhaven District Memorial Hospital

Shoalhaven St, Nowra - 4421 3111

INFORMATION SERVICES

Sussex Inlet

Neighbourhood Centre

170 Jacobs Drive - 4441 2003

Provides a range of community
services including: Centrelink Access
Centre, Tourism information.

JETTIES

Mooring Poles, Jetties, Wharves & Jetties

Rod Jones - 0428 783 225

NGD Waterworks Pty Ltd

Ned Doherty - 0431 703 647

www.ngdwaterworks.com.au

ned@ngdwaterworks.com.au

JUSTICES OF THE PEACE

[jp.lawlink.nsw.gov.au/public/
welcomePublic.do](http://jp.lawlink.nsw.gov.au/public/welcomePublic.do)

Andrew Sorial

Sussex Inlet Pharmacy - 4441 2444

Billie-May Ewings

Billie-May Ewings Conveyancing
4408 3030

Cathy Bowman

4441 2313 - 0401 441 111

Emil Sidhom

Sussex Inlet Pharmacy - 4441 2444

Kerry Ingram

4441 1166

Samantha Betts

SLB Accounting Services - 0417 064 127

Melissa Sheehy

0412 671 878

Todd Barkley

Raine & Horne - 4441 2121



SUSSEX INLET
*Foundation for Community
Development Inc.*

Neighbourhood Centre Services

Shop 1, 170-172 Jacobs Drive, Sussex Inlet

Community Transport Service, Mobility Equipment Hire,
Tourism Information Service, Centrelink Access Point,
Community Group Meeting Space, Exhibition/Art Gallery Space for Hire,
Community based ATM, Child and Youth Services, Emergency Services



centrelink

Access Point



Ph: 4441 2003



www.sussexneighbourhoodcentre.com.au

KAYAK HIRE

Riviera Caravan Park
4441 2112



KITCHENS & CABINETRY

Mr Makeover

Jeff - 0414 975 153
info@mrmakeover.com.au

P.J. & C.A. Brown

4441 1086 - 0414 808 293

Shoalhaven New Image Kitchens

4421 4411
info@newimagekitchens.com.au

LACHLAN POOLE MEMORIAL HEALTH CENTRE

(Sussex Inlet Community Health Centre)

Nielson Rd - 4443 7646 - 1300 792 755
Community Nurses, JB Hearing,
Domestic Violence Support, Women's
Health Nurse, Counselling & Early
Childhood Clinic.

LANDSCAPING

Lakeside Civil & Landscapes

Wade Carroll - 0437 966 355
www.lakesidecivilandlandscapes.com.au
wade@lakesidecivilandlandscapes.com.au

Parth Bricklaying Pty Ltd

Rob Parth - 4441 2921 - 0427 412 924



LAKESED CIVIL & LANDSCAPES

**Locally owned and operated Landscaping
and Civil Construction Contractor specialising in:**

- Retaining Walls
- Excavation
- Paving
- Turfing
- Garden Renovations
- Decks
- Irrigation Systems
- Lawn Coring

**Call 0437 966 355 for a
FREE measure and quote!**

www.lakesidecivilandlandscapes.com.au



**THE LANDSCAPE
ASSOCIATION**

LAUNDROMAT/LAUNDRY SERVICES

Inlet Laundry and Linen Services

Laundry services and Linen Hire
Lakehaven Drive Sussex Inlet
0414 268 203
www.inletlaundry.com.au

LAWYERS

Kennedy & Cooke Lawyers

Dianne L'Estrange (Notary Public)
164 Jacobs Dr. - 4441 2563

LEARN TO DRIVE



South Coast Learn to Drive

0459 691 530 - 0459 691 531
southcoastlearntodrive@gmail.com

MARINE RESCUE-RADIO ROOM-4442 8100

MARRIAGE CELEBRANTS

See Civil Celebrants

MASSAGE

Chinese Massage Therapy Clinic

192 Jacobs Drive – 0404 860 610

Shoalhaven Mobile Remedial Massage & Therapeutic Massage

Robyn Whittaker
4441 2625 - 0418 235 101
robynmaree@gmail.com

Thai Massage

Suite 4 /191 Jacobs Drive Sussex Inlet
Phone: 0466 969 955

MEALS ON WHEELS

196 Jacobs Dr 4441 3745 - 4455 2861

MECHANICAL REPAIRS

Car, Marine & Truck Electrics Mobile Auto Electrics

Dave Eggins - 0422 142 410

Moby's Mobile Mechanical Repairs

Jamie Moberget - 0412 301 967
mobysmechanical@gmail.com

Rob's Mobile Bumper Repairs

Rob Mulholland
4441 1744 - 0432 161 457

Sussex Inlet Mechanical Services

2/4 Flood Avenue
Cars, boats and lawnmowers
4441 1955 - 4441 3055



MEDICAL CENTRES

Sussex Doctors

180 Jacobs Dr - 4441 2786

Sussex Inlet Medical Centre

164 Jacobs Dr - 4441 2675

Sussex Inlet Medical Practice

7/196 Jacobs Dr – 4441 3900
Dr Sarah Ibrahim

MOORING POLES – see Jetties

NRMA

Motoring & Services
4 Flood Ave - 4441 2207 - Road
Service/Breakdown Service – 131 111

OPTOMETRIST

Sussex Optical

Martin Young - 1/196 Jacobs Dr.
4441 2417

ORRCA

24 hour Marine Mammal Incident &
Sighting Hotline: 02 9415 3333
www.orrca.org.au



PAINTERS



Adam Jacobs Painting & Decorating

0428 897 966

adamjacobs79@hotmail.com

Chris Madden's Painting & Decorating

0416 040 570

chrismadden425@gmail.com

Painter & Decorator - T Nau

0416 089 496

Jervis Bay Painting Services

0432 124 544

Gateway Plumbing Group

0400 412 863

www.gatewayplumbinggroup.com.au

- Stormwater Repairs And Inspections
- Hot Water Repairs And Installation
- Sewer Repairs And Inspections
- Gas Fitting
- Emergency Plumbing
- High Pressure Clearing
- Bathroom & Laundry Renovations

★★★★★ a month ago

We had engaged Gateway Plumbing Group for a quote on our residential project, Jordy was very quick to respond and attend our property.

Jordy is very professional, informative and quick with his quotes!

At the end of each work day Jordy ensured our property was clean, everything was working perfectly and we were happy with the end result.

No job was too hard or small for Jordy to attend and always showed up on time!

We have referred Gateway Plumbing Group to our family and will continue to use Jordy for all ongoing and future jobs!



PATHOLOGY

Southern IML Pathology

164 Jacobs Dr. - 4441 2836

Southern IML Pathology

180 Jacobs Dr. - 4441 2786

PEST CONTROL

CSI Pest Control

Mark Boyle - 4441 1555 - 0407 441 278

Regional Pest Services

Ken 0429 126 752 or 0437 322 708

regionalpest17@gmail.com

www.regionalpestservices.com.au

PHOTOGRAPHY

Air Appeal Photography

Dean Holland – 0418 484 066

Video Drone Footage

Kerry Chandler Photos

Kerry Chandler – 0425 236 640

Email: kerriechandlerphotos@gmail.com

PHYSIOTHERAPIST



Sussex Inlet Physiotherapy

Wendy Larcombe

2/159 Jacobs Dr - 4441 0669

sussexphysio@gmail.com

PLASTERERS

Stuart Hill

0418 848 241 - 4441 1256

Peter Penkow

Phone: 0412 057 142

PLAYGROUPS

St Mark's Playgroup

4441 1759 - 0428 823 779



Splash (Anglicare) Playgroup

0423 606 559

PLUMBERS

Afterdark Plumbing

Greg Turner

4441 1053 - 0412 480 970

Gateway Plumbing

0400 412 863

Ian Brown Plumbing

4441 2507 - 0418 631 562

Dynamic Tradies

1300 846 264

Marc Daley Plumbing

0423 682 274

Martin Doyle

0412 715 264

Shane Turner

0402 712 064

Trust Plumbing & Consultancy

0417 030 181

adam@trustcovsultancy.com.au

W. J. Griffiths Plumbing

Warwick Griffiths - 0418 279 273

PODIATRIST

Mt Keira Podiatry

Paul Buttel - 164 Jacobs Dr.
4226 5705

Samuel Gaffey Podiatry

Lockhart Medical Centre
180 Jacobs Dr.
4454 4155 (for appointments)

POLICE - 000

Sussex Inlet Police - 4441 2665

Nowra Police - 4421 9699

**Police Assistance Line (PAL)
131 444**

**Crime Stoppers (anonymous)
1800 333 000**

PONTOON HIRE

Sussex Inlet Pontoons For Hire

Danny Payne – 0414 803 644
www.sussexinletpontoons.com.au

The Blue Whale (Go Hire a Boat)
0412 446 247

POSTAL SERVICES

Sussex Inlet Post Office

196 Jacobs Dr. - 4441 2099

PUBLIC TELEPHONE

Public Telephone

Berrara Rd, Berrara

Public Telephone

Cnr River Rd & Jacobs Dr.
& opposite Lolly Heaven

Public Telephone

Hoffman Dr. Swanhaven

PUBLIC TOILETS



Berrara

near Berrara Creek - Berrara Rd
(Disabled access)

Chris Creek

Chris Creek Bridge, River Road

Cudmirrah

near Cudmirrah Hall in Koolyn Dr

Errol Bond Reserve

in Goonawarra Dr.

Sussex Inlet

behind Cinema in Jacobs Dr.
(Disabled access)

Finkernagel Oval

in Sandpiper Way

Ellmoos Reserve

near RSL in Jacobs Dr.

East of Boat Ramp

Sussex Inlet Waterfront Reserve in
Nielson Lane

Sussex Inlet South

near Marine Rescue in Sussex Rd

Lions Park

in Edgewater Ave
(Disabled access) (RV Dump station)

Sporting Complex

in Thomson St

Beside Surf Club

in Pacificana Dr.

Swan Lake

Dyball Reserve in Yarroma Ave,
Swanhaven

Ski Beach

on Springs Rd
(Disabled access)

PRESSURE CLEANING

**Pressure Cleaning
Painting - E & T Nau**
0416 089 496

RANGERS

Shoalhaven City Council Rangers
4455 3826

REAL ESTATE AGENTS

Dunes Lifestyle Sussex Inlet
157 Springs Rd – 4441 2222
www.hometownaustralia.com.au

Golfcourse Way Village
15 Golfcourse Way
0421 192 498
golfcoursewayvillage@gmail.com

L.J Hooker
1/159 Jacobs Dr.
75 holiday rentals
4441 2900 - 4441 2135
sussexinlet@ljhooker.com.au
www.holidaywithus.com.au

Pearl Property Agents
"The way real estate should be"
0430 117 048
pearlpropertyagents@realty.com.au

Raine & Horne
2/170-172 Jacobs Dr.
50 holiday rentals
4441 2121 - www.raine-horne.com.au

Real Property Agents
2/168 Jacobs Dr. - Holiday rentals
4441 3444
www.realpropertyagents.com.au

Snappy Gums Sussex Inlet
187 Springs Rd – 4441 2222
www.hometownaustralia.com.au

RECYCLING & WASTE DEPOT

The Springs Road - Open Fri, Sat, Sun,
Mon (9am -3pm). Open 7 Days - Dec
26 - Jan 31.

REMOVALIST

Sussex Inlet Removals
Phil Meredith
4441 0180 - 0412 483 065

RETIREMENT LIVING

Dunes Lifestyle Sussex Inlet
157 Springs Rd – 4441 2222
www.gatewaylifestyle.com.au

Golfcourse Way Village
15 Golfcourse Way
0421 192 498
golfcoursewayvillage@gmail.com

Inasmuch - Retirement Village
59 high quality retirement village units
4441 1666
www.inasmuch.org.au



Inasmuch Retirement Village

Enjoy your retirement with Inasmuch

- 59 high quality retirement village units and villas
- Access to activities and bus trips
- easy access to health and home care services

Prices range from \$300,000 to \$360,000 with flexible purchase options

Phone 02 4441 1666

Email consumer@inasmuch.org.au

Snappy Gums Sussex Inlet
187 Springs Rd – 4441 2222
www.gatewaylifestyle.com.au



REAL

PROPERTY AGENTS

The South Coast's Most Trusted Opinion

SALES

RENTALS

COMMERCIAL

RURAL

HOLIDAYS

02 4441 3444

www.realpropertyagents.com.au



ROSS



ALISON



PETER



KATE

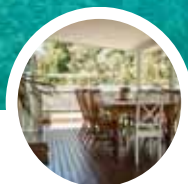


RACHEL



JASMINE

Real Escapes
South Coast



BOOK NOW

Sussex Inlet ~ Cudmirrah ~ Berrara

02 444 13 444

<https://realescapessouthcoast.com.au>

ROOFING

Sussex, Bay & Basin Metal Roofing

4441 2327 - 0422 143 755

RUBBISH TIP

see Recycling & Waste Depot

SAILING

Sussex Inlet Basin Yacht Club

0408 241 130 - sibyc.com.au

SCHOOL

Sussex Inlet Public School

Thomson Sussex Inlet - 4441 2053

www.sussexinle-p.schools.nsw.gov.au



SCHOOL MUSEUM

School Museum

Sussex Inlet Public School

Thomson St Viewed by arrangement

Val Williams - 0407 210 016

SECURITY DOORS & WINDOWS

Bay & Basin Security Doors (& Windows)

Daniel - 4443 6048

www.bayandbasinsecuritydoors.com.au

SES - 132 500

SIGN-WRITERS

Good Signs

Call Andrew 0431 30 30 40

www.goodsigns.com.au

South Coast Signs

Steven Douglass - 0431 159 162

YOUR REPRESENTATIVES

Federal Member for Gilmore:

Fiona Phillips - 4423 1782

fiona.phillips.mp@aph.gov.au

NSW Member for South Coast:

Liza Butler - Phone 02 4421 0222

southcoast@parliament.nsw.gov.au

LOCAL

Shoalhaven Councillors

**See website for current councillors
for each ward:**

www.shoalhaven.nsw.gov.au

COMMUNITY FORUM

Meet on 3rd Monday 7.30pm at

Thompson Street Hall

Email: secretary@sussexdistrictsforum.com.au

SOLAR

Schmick Energy

Pete Skewes - 0402 132 800

SPRAY PAINTING

Rob's Mobile Bumper Repairs

0432 161 457

STAND UP PADDLE BOARDING

Stand up Paddle Board Hire

Sussex Inlet Marine Centre

River end of Jacobs Dr. - 4441 2086

Sussex Inlet Stand Up Paddle

Madeline Rayner - 0421 120 376

www.sussexinletsup.com

STORAGE FACILITIES

All Storage Sussex Inlet

12 Flood Ave – 0490 396 034

allstoragesussexinlet@gmail.com



Storage units from 6 sq metres to 72 sq metres from \$20 per week.

- ✓ 24 hour access available, 7 days a week.
- ✓ Access code security, alarmed and video surveillance.

Also secure compound parking for cars, trucks, caravans, boats, plant & machinery, containers etc.

Ph: 0490 396 034

12 Flood Ave Sussex Inlet NSW 2540

Email: allstoragesussexinlet@gmail.com

www.allstoragesussexinlet.com.au

Sussex Inlet Storage & Mini Storage

5 Flood Ave. - 4441 2791

SURFING LESSONS

JB Surf School

www.jbsurfschool.com.au

0449 266 994



SUSSEX INLET NEIGHBOURHOOD CENTRE

Community Health Bus, Evergreens, Diabetic Support Group, Craft Group, Centrelink Access Centre, Tele-call Service, Hiring of wheelchairs, commodes, shower chairs, etc.

Phone: 4441 2003

TENNIS COURT HIRE

Tennis Courts - Lakeside Cabins & Holiday Village - 4441 2516

**Tennis Courts
Thomson St**

BOOK ONLINE ➡



Social Tennis • Pickleball Tennis Coaching

*All information at
Sussex Inlet Tennis Club website:*



www.play.tennis.com.au/SussexInletTC

TIDE CHARTS

Available at:
The Sussex Tackle & Toy Box and
www.willyweather.com.au

TIP

see *Recycling & Waste Depot*

TOWING

Sussex Inlet Mechanical Services
4441 1955 - 4441 3055

TRAILER REPAIRS & SERVICE

Bosun Wholesale
Trailer repairs, service & modifications
- 4441 2791

Sussex Inlet Mechanical Services
4 Flood Ave - 4441 1955

TRANSPORT SERVICES

Community Health Bus
4441 2003

Plan B - Passenger Service
0433 550 780
Thurs & Fri: 4:30pm until late
Sat & Sun: 11am until late

Premier Motor Service
133 410
www.premierms.com.au

Priors Bus
1800 816 234
www.priorsbus.com.au

Railway - City Rail - Bomaderry
4423 6416

Shoal Bus
4423 2122
www.shoalbus.com.au

Sussex Inlet Taxi Service
0400 444 110 or 4441 1000

TREE SERVICES

Inlet Tree Services
2 Harbord St - 0439 005 464

**Neil & Sue Wiggins Trading as
Steve Daley Tree Services**
4441 2462 - 0418 457 749

VETERINARY SURGERY

Sussex Inlet Veterinary Service
Dr Lauren Leicester
179 River Rd - 4441 1011



WALL & FLOOR TILERS

Clayton Keywood Tiling
4441 3505 - 0413 990 645

Dave Wheeler
0412 709 529

G. & A. Elliott
4441 0698 - 0419 713 990

Kyle Cregan
0402 022 499
kylecregan@hotmail.com

Tou-Can Tiling
Luke Elliott - 0412 446 287
lukeelliott22@hotmail.com

WATERPROOFING

Riviera Building & Construction Pty Ltd

Michael Jones - 4441 1773

WEBSITE DESIGN

Scott Morgan - Multimedia Design

0414 785 776

info@scottmorgan.com.au

www.scottmorgan.com.au



Website Design
Graphic Design
Printing • Marketing
Logo Design
and more...

📞 0414 785 776

✉ info@scottmorgan.com.au

🌐 scottmorgan.com.au

WELDERS

Bosun Wholesale

4441 2791

Metal Fabrication & Welding

Dave Mazzuoli - 0432 217 267

MS Custom Trailers

Mat Sheehy - 0402 602 646

Robert Lidbetter Mobile Welding

4441 1383 - 0412 006 300

WILDLIFE RESCUE SOUTH COAST

www.wildlife-rescue.org.au

0418 427 214 - (24/7)

Snakeaware - Venomous reptile & wildlife management

0431 455 790

www.snakeaware.com.au



The businesses listed here have been extracted from:

www.sussexinlet.nsw.au

For the listings to remain current businesses are requested to email any changes of their listing to:

The Secretary

Sussex Inlet District Chamber of Commerce Inc

sussexinletchamberofcommerce@gmail.com

The information in this booklet is true and complete to the best of our knowledge. The authors/publisher disclaim any liability in connection with the use of this information.

WINDOW CLEANER

Bettakleen - T. Valentine
4441 2329 - 0414 714 457

**John's Home Window
Cleaning Service**
4441 3743 – 0418 675 455



Glossy Black Cockatoo



Doe with Joey



Photo by Garry Sims



INASMUCH COMMUNITY PANTRY

OPEN 9am - 1pm WEDNESDAY - SATURDAY



**WE ARE LOCATED VIA THE INASMUCH COMMUNITY OP SHOP
ON JACOBS DRIVE SUSSEX INLET**

**If you are struggling to make ends meet
our INASMUCH PANTRY is available to help you**

**WE OFFER A VARIETY OF PANTRY ITEMS CHANGING CONSTANTLY SUCH
AS MEAT, PASTA, RICE, FROZEN MEALS AND TOILETRIES**

FOR MORE INFORMATION CONTACT US AT ☎ 0492 859 848

GOLFCOURSE WAY VILLAGE SUSSEX INLET



Manufactured Homes For Sale

For enquiries: 0490 396 034

*Golfcourse Way Village
15 Golfcourse Way, Sussex Inlet NSW 2540*

As a member of Business NSW our Chamber members get FREE advice on Awards, Pay rates, government policy and funding information

The Sussex Inlet and District Chamber of Commerce plays a key leadership role in the community including:

- Support for local business with marketing and promotion.
- Advocacy with Shoalhaven Council for new businesses and to address community concerns.
- Development of a large range of community events to assist our local businesses to increase their financial viability and to offer activities for our local community and visitors.
- Development of funding applications for grants to improve our services and infrastructure.
- Arranging guest speakers from Shoalhaven Council and NSW and Australian Government Services to keep our community up to date.
- Partnerships and collaboration with other Sussex Inlet organisations.

How you can get involved with the Chamber of Commerce:

- Become a member if your a local business - \$60 per year or \$120 for 3 years.
- Become a Friend of the Chamber to keep in touch with the latest information.
- Volunteer for events such as the **Viking Festival**, **Summer at Sussex** and **Winter at Sussex**.

APPLY FOR MEMBERSHIP ONLINE AT
www.sussexinlet.nsw.au/membership-enquiry
Email: sussexinletchamberofcommerce@gmail.com



Shoalhaven
SOUTH COAST - NSW

Sussex Inlet District

www.sussexinlet.nsw.au